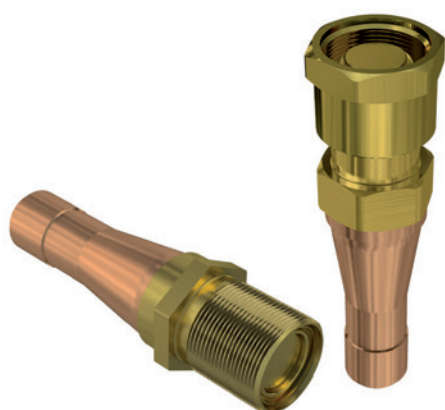


RFCS



Screw to connect couplings for air conditioning & refrigeration application.

This range of couplings has been specifically designed for air conditioning and refrigeration systems. Interchangeability according to market driven standards. Couplers in brass material with copper sweat braze adaptor.



Applications



Technical Specifications

dash	Size		Working Pressure (MPa)	Flow Rate* (g/s)	Air inclusion and fluid loss (cc max)	Maximum leakage rate** (g/year)	Burst pressure (MPa)		
	mm	inch					Male	Female	Male + Female
06	10	3/8"	6	44	0.05	1	21	19	26
08	12.5	1/2"	5	107	0.1	1	26	15	25
12	20	3/4"	5	288	0.1	1	21	15	19
16	25	1"	5	477	0.2	1	13	15	15

* Flow rate calculated considering air in standard conditions (20°C, 1 bar). For other gases refer to density table on page 241.

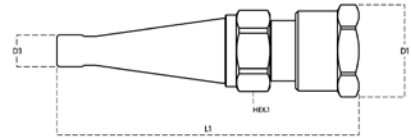
** R22 equivalent refrigerant, at operating range, both connected and disconnected.

Material	Brass Copper
Seals	CR (Neoprene)
Working temperatures	- 40 °C to + 120 °C
Surface treatment	
Series Interchange	MARKET

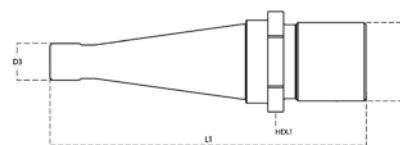
Valve Type	Flat
Connection	Screw to Connect
Disconnection	Unscrew to Disconnect
Connection Under Pressure	Allowed Residual



RFCS - Copper sweat



Size		Adaptor Details	FEMALE									
mm	inch		Part Number	L (L1 + Thread)		D1		D3		Hex1		
		Adaptor Type		mm	inch	mm	inch	mm	inch	mm	inch	
10	3/8"	COPPER SWEAT	RF 06 CS065 F5N	67.5	2.66	25.0	0.98	6.5	0.26	22.0	0.87	
10	3/8"	COPPER SWEAT	RF 06 CS095 F5N	76.0	2.99	27.0	1.06	9.7	0.38	22.0	0.87	
12.5	1/2"	COPPER SWEAT	RF 08 CS095 F5N	111.0	4.37	34.0	1.34	9.7	0.38	27.0	1.06	
12.5	1/2"	COPPER SWEAT	RF 08 CS125 F5N	107.0	4.21	34.0	1.34	12.8	0.50	27.0	1.06	
12.5	1/2"	COPPER SWEAT	RF 08 CS160 F5N	107.0	4.21	34.0	1.34	16.1	0.63	27.0	1.06	
20	3/4"	COPPER SWEAT	RF 12 CS160 F5N	131.0	5.16	45.0	1.77	16.1	0.63	36.0	1.42	
20	3/4"	COPPER SWEAT	RF 12 CS190 F5N	131.0	5.16	45.0	1.77	19.2	0.76	36.0	1.42	
20	3/4"	COPPER SWEAT	RF 12 CS220 F5N	131.0	5.16	45.0	1.77	22.4	0.88	36.0	1.42	
25	1"	COPPER SWEAT	RF 16 CS220 F5N	130.8	5.15	53.0	2.09	22.4	0.88	48.0	1.89	
25	1"	COPPER SWEAT	RF 16 CS255 F5N	146.5	5.77	55.0	2.17	25.6	1.01	46.0	1.81	
25	1"	COPPER SWEAT	RF 16 CS290 F5N	146.5	5.77	55.0	2.17	28.7	1.13	50.0	1.97	



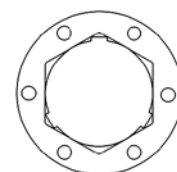
RFCS - Copper sweat

Size		Adaptor details	MALE									
mm	inch		Adaptor Type	Part Number	L (L1 + Thread)		D1		D3		Hex1	
						mm	inch	mm	inch	mm	inch	mm
10	3/8"	COPPER SWEAT	RF 06 CS065 M5N	67.5	2.66	25.0	0.98	6.5	0.26	22.0	0.87	
10	3/8"	COPPER SWEAT	RF 06 CS095 M5N	100.0	3.94	32.0	1.26	9.7	0.38	28.0	1.10	
12.5	1/2"	COPPER SWEAT	RF 08 CS095 M5N	100.0	3.94	32.0	1.26	9.7	0.38	28.0	1.10	
12.5	1/2"	COPPER SWEAT	RF 08 CS125 M5N	96.0	3.78	32.0	1.26	12.8	0.50	28.0	1.10	
12.5	1/2"	COPPER SWEAT	RF 08 CS160 M5N	94.0	3.70	32.0	1.26	16.1	0.63	28.0	1.10	
20	3/4"	COPPER SWEAT	RF 12 CS160 M5N	118.5	4.67	46.0	1.81	16.1	0.63	41.0	1.61	
20	3/4"	COPPER SWEAT	RF 12 CS190 M5N	118.5	4.67	46.0	1.81	19.2	0.76	41.0	1.61	
20	3/4"	COPPER SWEAT	RF 12 CS220 M5N	130.8	5.15	53.0	2.09	22.4	0.88	48.0	1.89	
25	1"	COPPER SWEAT	RF 16 CS220 M5N	130.8	5.15	53.0	2.09	22.4	0.88	48.0	1.89	
25	1"	COPPER SWEAT	RF 16 CS255 M5N	130.8	5.15	53.0	2.09	25.6	1.01	48.0	1.89	
25	1"	COPPER SWEAT	RF 16 CS290 M5N	130.8	5.15	53.0	2.09	28.7	1.13	48.0	1.89	

RFCS Accessories and Spares



Aluminium dust protections



Mounting flanges