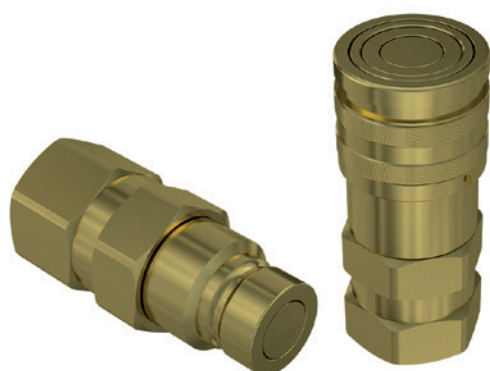




2FFI brass

Flat face couplings, ISO 16028, brass.

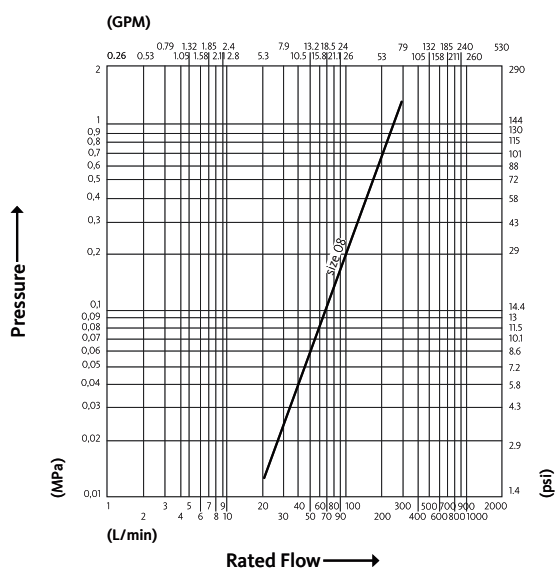
Flat face couplings, with brass components and seals in Viton. Suitable for industrial applications. ISO 16028 interchange.



Applications



Pressure Drop



Test performed according to ISO 18869

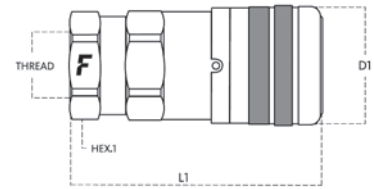
Technical Specifications

dash	Size mm	inch	Working Pressure (MPa)	Flow Rate (l/min)	Spillage (ml)	Force to Connect (N)	Burst pressure (MPa)		
							Male	Female	Male + Female
08	12.5	1/2"	12	100	0.01	220	50	50	50

Material	Brass
Seals	VITON
Working temperatures	- 20 °C to + 200 °C
Surface treatment	
Series Interchange	ISO 16028

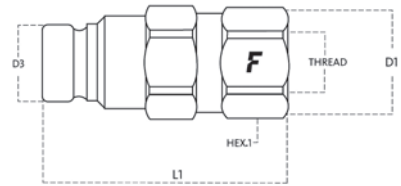
Valve Type	Flat
Connection	Push to Connect
Disconnection	Sleeve Retraction
Connection Under Pressure	Not Allowed





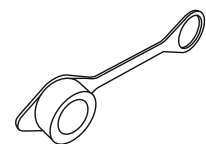
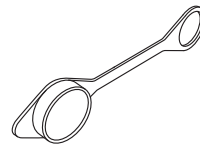
2FFI brass

Size		Thread details			FEMALE							
mm	inch	Thread Type	Standard	Thread	Part Number	L (L1 + Thread)		D1		HEX1		
						mm	inch	mm	inch	mm	inch	
12.5	1/2"	F NPTF	ANSI B1.20.3	NPTF 3/4" FEMALE	2FFI12-34NPTF5V	86.4	3.4	38	1.5	34	1.34	



Size		Thread details			MALE								
mm	inch	Thread Type	Standard	Thread	Part Number	L (L1 + Thread)		D1		D3		HEX1	
						mm	inch	mm	inch	mm	inch	mm	inch
12.5	1/2"	F NPTF	ANSI B1.20.3	NPTF 3/4" FEMALE	FFI12-34NPTM5V	81.5	3.21	38	1.5	24.5	0.96	34	1.34

2FFI brass Accessories and Spares



PVC dust protections



Aluminium dust protections

