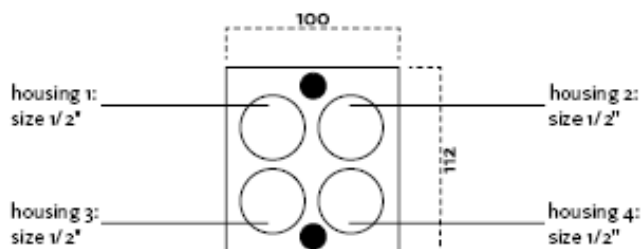


3P508-4-12G M C

Multifaster 4 lines: Male plate - 4 housings 1/2".

Application



Technical Specifications

dash	Size		Working Pressure		Flow Rate (l/min)	Spillage (ml)	Burst pressure (MPa & psi)					
	mm	inch	(MPa)	(psi)			Male		Female		Male + Female	
08	12,5	1/2 "	25	3626	70	0,01	100	14504	100	14504	100	14504

Materials	Aluminium; Steel
Seals	
Working temperatures	-25°C to 100°C -13 F° to 212 F°
Surface treatment	CARBON STEEL (CRIII); Paint

Valve Type	Flat
Connection	Lever
Disconnection	Lever
Connection Under Pressure	

3P508-4-12G M C

Mobile Plate

	Housing size	Thread Type	Thread Standard	Thread size	Component Type
Hou.1	1/2"	--/ BSP	BSP FEMALE	1/2"	Coupling
Hou.2	1/2"	--/ BSP	BSP FEMALE	1/2"	Coupling
Hou.3	1/2"	--/ BSP	BSP FEMALE	1/2"	Coupling
Hou.4	1/2"	--/ BSP	BSP FEMALE	1/2"	Coupling

Thread chart

	--/BSP				

Couplings spare parts

	Housing size	Spare Part code
Hou.1	1/2"	KIT3FNP12GAS M
Hou.2	1/2"	KIT3FNP12GAS M
Hou.3	1/2"	KIT3FNP12GAS M
Hou.4	1/2"	KIT3FNP12GAS M

Plate spare parts

Component	Spare Part code
Male plate	KIT VP8 (SCREWS), KIT GP4 (PINS)