



THE TOUGHEST SWIVELS ON THE MARKET

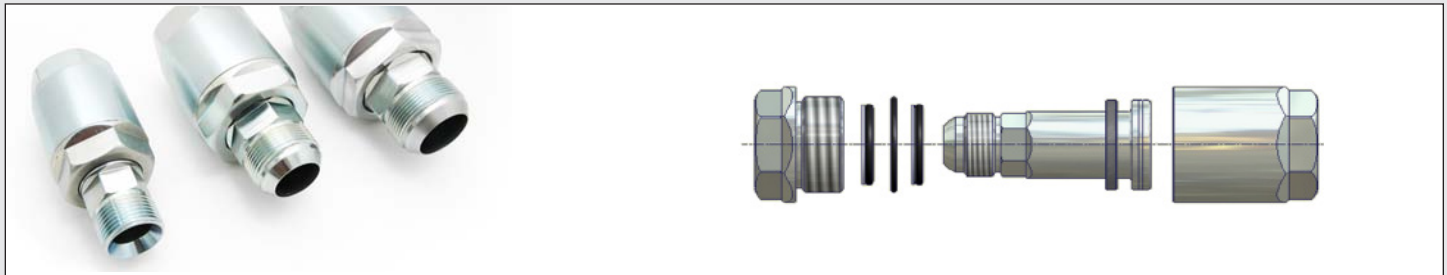


HOW TO ORDER

SZ	J	16	M	J	16	M
BODY CONFIGURATION	SHANK THREAD	THREAD SIZE	SHANK CONFIGURATION	HOUSING THREAD	THREAD SIZE	HOUSING CONFIGURATION
SZ = IN-LINE SWIVEL SZ90 = 90° SWIVEL	J = JIC (37°) F = NPT P = BSPP S = ORFS M = Metric		M = MALE MS = MALE SHORT SERIES	J = JIC (37°) JB = JIC (37°) combo ORB F = NPT P = BSPP S = ORFS M = Metric		M = MALE F = FEMALE MB = MALE BULKHEAD

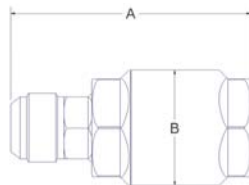
IN-LINE SWIVELS – EXTREME DUTY

- **Pressure Spike Protection™**
- **Easy and quick to repack**
- **Triple Seal leak Protection™**
- **Patented ball-less design**
- **Cannot pull apart**

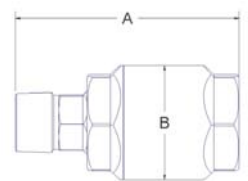


Most common – More sizes & configurations available at www.taimi.ca

**Male JIC (37°)
Female NPT**



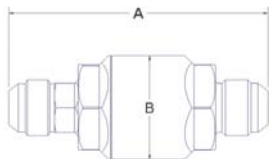
**Male NPT
Female NPT**



PART NUMBER	A	B	SEAL KIT
SZ-J08M-F08F	3.09"	1.50"	SZ-08-001SK-A
SZ-J12M-F12F	3.95"	2.00"	SZ-12-001SK-A
SZ-J16M-F16F	4.43"	2.29"	SZ-16-001SK-A
SZ-J20M-F20F	4.80"	2.88"	SZ-20-001SK-A

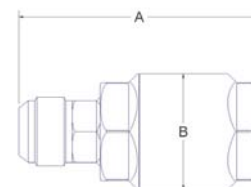
PART NUMBER	A	B	SEAL KIT
SZ-F06M-F06F	2.42"	1.35"	SZ-06-001SK-A
SZ-F08M-F08F	3.00"	1.53"	SZ-08-002SK-A
SZ-F12M-F12F	3.88"	2.00"	SZ-12-001SK-A
SZ-F16M-F16F	4.12"	2.29"	SZ-16-001SK-A

Male JIC (37°)
Male JIC (37°)



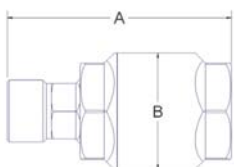
PART NUMBER	A	B	SEAL KIT
SZ-J06M-J06M	2.91"	1.25"	SZ-06-001SK-A
SZ-J08M-J08M	3.88"	1.50"	SZ-08-001SK-A
SZ-J12M-J12M	4.94"	2.00"	SZ-12-001SK-A
SZ-J16M-J16M	5.56"	2.29"	SZ-16-001SK-A
SZ-J20M-J20M	6.06"	2.88"	SZ-20-001SK-A
SZ-J24M-J24M	6.44"	3.12"	SZ-24-001SK-A
SZ-J32M-J32M	7.69"	3.88"	SZ-32-001SK-A

Male JIC (37°)
Female JIC (37°)
combo ORB SAE J1926-3



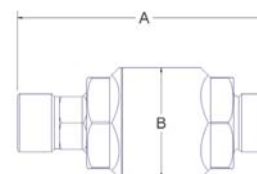
PART NUMBER	A	B	SEAL KIT
SZ-J08M-JB08F	3.31"	1.50"	SZ-08-001SK-A
SZ-J10M-JB10F	3.45"	1.73"	SZ-10-001SK-A
SZ-J12M-JB12F	4.12"	2.00"	SZ-12-001SK-A
SZ-J16M-JB16F	4.63"	2.29"	SZ-16-001SK-A
SZ-J20M-JB20F	5.12"	2.88"	SZ-20-001SK-A
SZ-J24M-JB24F	5.34"	3.12"	SZ-24-001SK-A
SZ-J32M-JB32F	6.50"	3.88"	SZ-32-001SK-A

Male BSPP
Female BSPP



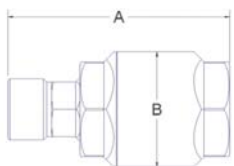
PART NUMBER	A	B	SEAL KIT
SZ-P08M-P08F	2.94"	1.53"	SZ-08-002SK-A
SZ-P12M-P12F	3.81"	2.00"	SZ-12-001SK-A
SZ-P16M-P16F	4.31"	2.29"	SZ-16-001SK-A
SZ-P20M-P20F	4.50"	2.88"	SZ-20-001SK-A

Male BSPP
Male BSPP



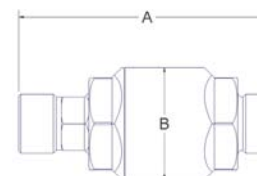
PART NUMBER	A	B	SEAL KIT
SZ-P08M-P08M	3.44"	1.53"	SZ-08-002SK-A
SZ-P12M-P12M	4.52"	2.00"	SZ-12-001SK-A
SZ-P16M-P16M	5.06"	2.29"	SZ-16-001SK-A

Male ORFS
Female ORFS



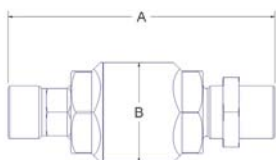
PART NUMBER	A	B	SEAL KIT
SZ-S08M-S08F	3.00"	1.53"	SZ-08-002SK-A
SZ-S12M-S12F	3.86"	2.16"	SZ-12-002SK-A
SZ-S16M-S16F	4.38"	2.40"	SZ-16-002SK-A
SZ-S20M-S20F	4.68"	2.88"	SZ-20-002SK-A

Male ORFS
Male ORFS



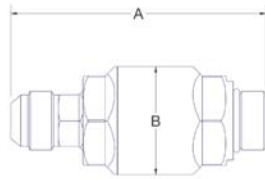
PART NUMBER	A	B	SEAL KIT
SZ-S06M-S06M	2.77"	1.35"	SZ-06-002SK-A
SZ-S08M-S08M	3.50"	1.53"	SZ-08-002SK-A
SZ-S10M-S10M	3.79"	1.86"	SZ-10-002SK-A
SZ-S12M-S12M	4.52"	2.16"	SZ-12-002SK-A
SZ-S16M-S16M	5.12"	2.40"	SZ-16-002SK-A
SZ-S20M-S20M	5.46"	2.88"	SZ-20-002SK-A

Male Metric
Male Metric bulkhead



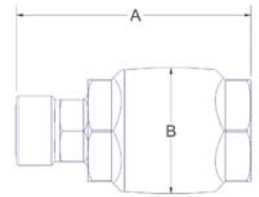
PART NUMBER	A	B	SEAL KIT
SZ-M36SM-M36SMB	5.95"	2.40"	SZ-16-002SK-A
SZ-M42SM-M42SMB	7.07"	2.88"	SZ-20-001SK-A

**Male JIC
Male ORB**



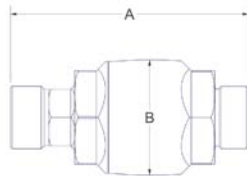
PART NUMBER	A	B	SEAL KIT
SZ-J12M-B12M	4.67"	2.00"	SZ-12-001SK-A
SZ-J16M-B16M	5.23"	2.29"	SZ-16-001SK-A

**Male ORFS
Female JIC (37°)
combo ORB SAE J1926-3**



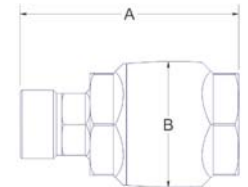
PART NUMBER	A	B	SEAL KIT
SZ-S12M-JB12F	4.05"	2.16"	SZ-12-002SK-A
SZ-S16M-JB16F	4.56"	2.40"	SZ-16-002SK-A

**Male METRIC
Male METRIC**



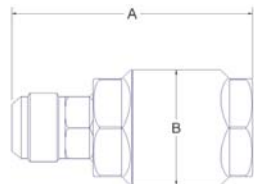
PART NUMBER	A	B	SEAL KIT
SZ-M24SM-M24SM	3.78"	1.86"	SZ-10-002SK-A
SZ-M30SM-M30SM	4.45"	2.16"	SZ-12-002SK-A
SZ-M30SM-M36SM	4.57"	2.09"	SZ-12-002SK-A
SZ-M30SM-M42SM	4.65"	2.09"	SZ-12-002SK-A
SZ-M36SM-M36SM	5.04"	2.40"	SZ-16-002SK-A
SZ-M42SM-M42SM	5.39"	2.88"	SZ-20-001SK-A

**Male METRIC
Female BSPP**



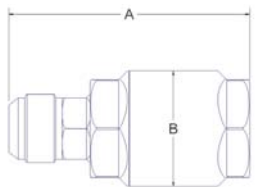
PART NUMBER	A	B	SEAL KIT
SZ-M20SM-P08F	2.97"	1.53"	SZ-10-002SK-A
SZ-M24SM-P08F	3.19"	1.86"	SZ-12-002SK-A
SZ-M24SM-P10F	3.19"	1.86"	SZ-12-002SK-A
SZ-M30SM-P12F	3.77"	2.16"	SZ-12-002SK-A
SZ-M36SM-P16F	4.25"	2.40"	SZ-16-002SK-A
SZ-M42SM-P20F	4.57"	2.88"	SZ-20-001SK-A

**Male JIC (37°)
Female ORB SAE J1926-2**



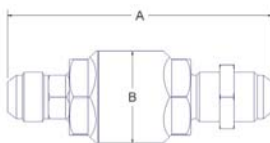
PART NUMBER	A	B	SEAL KIT
SZ-J12M-B12F	4.12"	2.00"	SZ-12-001SK-A
SZ-J16M-B16F	4.63"	2.29"	SZ-16-001SK-A

**Male JIC (37°)
Female BSPP**



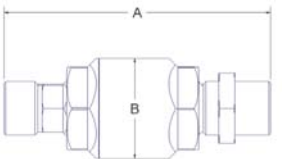
PART NUMBER	A	B	SEAL KIT
SZ-J12M-P12F	4.19"	2.00"	SZ-12-001SK-A
SZ-J16M-P16F	4.88"	2.29"	SZ-16-001SK-A
SZ-J20M-P20F	5.37"	2.88"	SZ-20-001SK-A

**Male JIC (37°)
Male JIC (37°) bulkhead**



PART NUMBER	A	B	SEAL KIT
SZ-J06M-J06MB	3.63"	1.23"	SZ-06-001SK-A
SZ-J08M-J08MB	4.63"	1.50"	SZ-08-001SK-A
SZ-J12M-J12MB	5.69"	2.00"	SZ-12-001SK-A
SZ-J16M-J16MB	6.31"	2.29"	SZ-16-001SK-A
SZ-J20M-J20MB	6.94"	2.88"	SZ-20-001SK-A

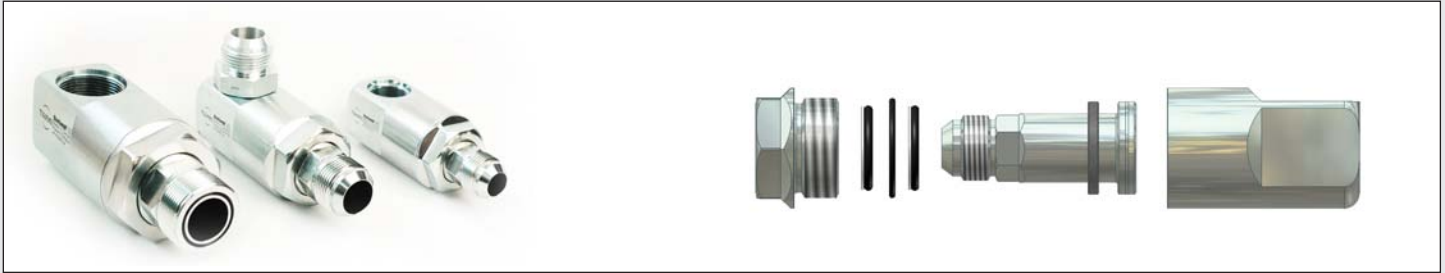
**Male ORFS
Male ORFS bulkhead**



PART NUMBER	A	B	SEAL KIT
SZ-S08M-S08MB	4.25"	1.53"	SZ-08-002SK-A
SZ-S10M-S10MB	4.54"	1.86"	SZ-10-002SK-A
SZ-S12M-S12MB	5.25"	2.16"	SZ-12-002SK-A
SZ-S16M-S16MB	5.88"	2.20"	SZ-16-002SK-A
SZ-S20M-S20MB	6.29"	2.88"	SZ-20-002SK-A

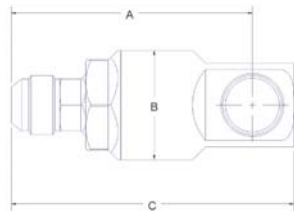
90° SWIVELS EXTREME DUTY – STANDARD SERIES

- Patented ball-less design
- No snap ring, will not pull apart
- Pressure Spike Protection™
- Easy and quick to repack
- Triple Seal leak Protection™



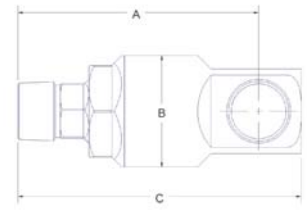
Most common – More sizes & configurations available at www.taimi.ca

Male JIC Female ORB



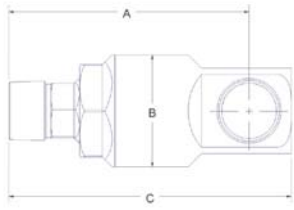
PART NUMBER	A	B	C	SEAL KIT
SZ90-J06M-B06F	2.51"	1.23"	2.95"	SZ-06-001SK-A
SZ90-J08M-B08F	3.31"	1.47"	3.84"	SZ-08-001SK-A
SZ90-J12M-B12F	4.32"	1.97"	5.07"	SZ-12-001SK-A
SZ90-J16M-B16F	4.91"	2.22"	5.81"	SZ-16-001SK-A
SZ90-J20M-B20F	5.71"	2.72"	6.80"	SZ-20-001SK-A

Male NPT Female ORB



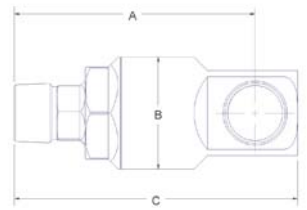
PART NUMBER	A	B	C	SEAL KIT
SZ90-F08M-B08F	3.25"	1.53"	3.78"	SZ-08-002SK-A
SZ90-F12M-B12F	4.23"	1.97"	4.98"	SZ-12-001SK-A
SZ90-F16M-B16F	4.60"	2.22"	5.50"	SZ-16-001SK-A
SZ90-F20M-B20F	5.38"	2.72"	6.47"	SZ-20-001SK-A

Male ORFS Female ORB



PART NUMBER	A	B	C	SEAL KIT
SZ90-S08M-B08F	3.30"	1.53"	3.81"	SZ-08-001SK-A
SZ90-S12M-B12F	4.20"	2.09"	4.98"	SZ-12-001SK-A
SZ90-S16M-B16F	4.84"	2.31"	5.75"	SZ-16-001SK-A
SZ90-S20M-B20F	5.44"	2.72"	6.54"	SZ-20-001SK-A

Male BSPP Female ORB



PART NUMBER	A	B	C	SEAL KIT
SZ90-P08M-B08F	3.24"	1.53"	3.77"	SZ-08-002SK-A
SZ90-P12M-B12F	4.23"	1.97"	4.98"	SZ-12-001SK-A
SZ90-P16M-B16F	4.84"	2.22"	5.75"	SZ-16-001SK-A
SZ90-P20M-B20F	5.44"	2.72"	6.54"	SZ-20-001SK-A

PRESSURE CAPABILITIES

Taimi swivels and cartridges (other than stainless steel) have pressure capabilities of:

SIZES	PSI	Bar
06 - 08 - 10 - 12 - 16	6250	430
20	5600	386
24	4500	310
32	3000	205

SAFETY PRECAUTIONS

When assembling or doing maintenance on hydraulic systems and hose assemblies, it is of uttermost importance to be properly trained, use appropriate tools, components and equipment, follow specifications and think safety. Otherwise, serious injury may happen or even worse.

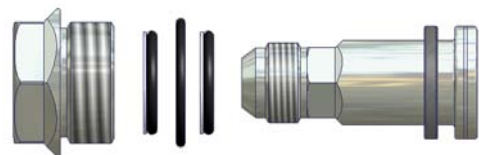
Pressure capabilities of Taimi products must be respected for safety purposes.

You may have to replace the seal kit inside your Taimi products at some point. It is important to torque Taimi cartridges according to the torque chart. If Taimi cartridges are overtorqued, a housing failure may happen over time causing serious injuries. An undertorqued swivel may dismantle causing serious injuries. Visually inspect your Taimi products for evidence of leakage, wear, or damage. Replace damaged swivels immediately.

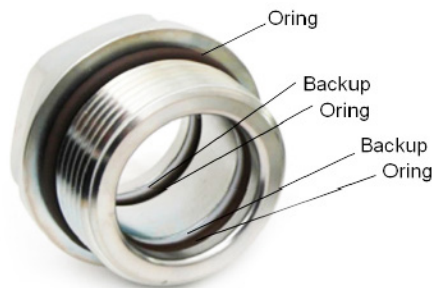
SEAL KIT REPLACEMENT

8 easy steps to quickly repack your swivel

- 1. Read the safety precautions in product catalog before going any further!**
- 2. Relieve pressure before dismantling hydraulic lines**
- 3. Clean work space** - Parts, tools, hands, clothing
- 4. Remove nut**
Pneumatic torque tool and vise recommended
- 5. Remove seal kit** - Remove debris & clean grooves
- 6. Install new seal kit** See picture
- 7. Assemble cartridge**



- 8. Tightening**
Respect recommended torque
Over-tightening may result in swivel failure
Under-tightening may result in swivel dismantling



Swiwell assembly torque		
SIZES	Ft-lbs	Nm
06	125	170 Nm
08	215	290 Nm
10	300	405 Nm
12	390	530 Nm
16	490	665 Nm
20	800	1085 Nm
24	900	1220 Nm
32	1000	1355 Nm

Dry torque - Lubricate external o-ring

OTHER PRODUCTS

Visit www.taimi.ca for more information

Strap-Wrap™



Designed to efficiently group, route and protect hydraulic hoses against stretching and tearing

Swiwell Cartridges™



Designed to be integrated into hydraulic manifolds. It simply screws in, becoming a short and very sturdy swivelling coupling that will live through high pressure and side loads

Swiwell Manifolds™



Integrating our Swiwell Cartridges™, these blocks are used in multiple applications where hoses are wearing fast or loosening due to twisting or hammering effect

Swiroll™



Spherical hydraulic joint specially designed to improve hose group reliability on rotating attachments



TAIMI PRODUCTS ARE PATENTED (OR PATENT PENDING) IN THE FOLLOWING TERRITORIES :

AUSTRALIA (AU 2007240098 B2, AU 2006326839 B2), BRAZIL (BR PI0710624-6, BR PI0620175-0), CANADA (CA 2.643.950, CA 2.633.103, CA 2.635.821), CHINA (ZL200780021438.6, ZL 200680052586.X), FINLAND (EP 2 013 526), FRANCE (EP 2 013 526), GERMANY (DE 60 2007 033 880.8), INDIA (IN 4270/KOLNP/2008, IN 2662/KOLNP/2008), ITALIA (EP 2 013 526), MEXICO (MX 292803, MX 291376), RUSSIA (RU 2406010, RU 2414642), SWEDEN (EP 2 013 526), UNITED KINGDOM (EP 2 013 526), U.S.A. (US 7.938.451, US 8.047.579, US 7.895.716).

