



With 75 years of experience in the hydraulic industry, Faster has designed and manufactured over 500 million quick-release couplings and has registered more than 140 patents.

Our product portfolio entails several solutions, grouped into different categories: single couplings, Casting Solutions, MultiFaster, Check Valves, Swivels and Custom Multiconnections. Our offer covers several areas of application, including Agriculture, Mobile & Construction Equipment, Industrial & Other Applications.

ICONS LEGEND



Connection Under Pressure:
Allowed Male Half up to W.P.



Connection Under Pressure:
Allowed Both Halves



Connection Under Pressure:
Allowed Residual



Connection and disconnection under
residual pressure both halves



Disconnection Under Pressure:
Allowed Male Half up to W.P.



Connection Under Pressure:
Not Allowed

Agriculture

Agriculture is the leading field of application for quick-release hydraulic couplings. Faster has developed a full range of products, covering all the hydraulic connections on regular tractors, both on rear hydraulic lines and front loaders. Moreover, we have selected products specifically designed for harvesting applications.

Sleeve Retraction



NV



Male and Female couplings with poppet valve shut-off system. Available in sizes: 1/4", 3/8", 1/2", 3/4", 1", 1-1/4", 1-1/2", 2".

Accessories and spares



TM _ / TF _



TM _ S / TF _ S



TM 12-38



Seal kits

ANV



Standard couplings for agriculture applications. Available in size; 1/4", 3/8", 1/2", 3/4", 1", 1-1/4", 1-1/2", 2".

Accessories and spares



Seal kits

ANV Zinc-Nickel



Standard couplings for agriculture applications with Zn-Ni surface treatment for improved resistance. ISO 7241 part A interchange. Available in size; 1/4", 3/8", 3/4", 1".

Accessories and spares



Seal kits

Push-Pull



CPV Zinc-Nickel



Push-pull couplings, designed for panel mounting installation. Zinc-Nickel Surface Treatment for improved resistance. Breakaway function. ISO 7241 part A interchange. Wide range of threads available upon request.

Available in size 1/2".

Accessories and spares



TM 12 .../TM 12-38 ...



TM 12 S



Seal kits

3CPV



Female couplings designed for panel mounting installation and connection to flexible hoses. Connectable with Male under residual pressure. Breakaway function. Available in size 1/2".

Accessories and spares



TA ...



TM 12 .../TM 12-38 ...



TARV 45



Seal kits

6DNPV



Push-Pull Female couplings for rigid mounting connectable with Male and Female under pressure, disconnectable under pressure with low effort. Equipped with one or two oil collecting ports to collect clean oil and reduce spillage. Available in size 1/2".

Accessories and spares



Seal kits

Screw to Connect



CVV



Screw-on couplings suitable for general purpose applications. Connectable under residual pressure. High resistance to pressure and flow impulses. Interchangeable according to ISO 14541 standard for size: 1/4"; 3/8"; 1/2"; 3/4". Working Pressure according to ISO 14541, that requires a safety factor 4:1 on minimum burst pressure. The couplings can perfectly work with a safety factor 3:1 and consequently with higher working pressure

Accessories and spares



TMVV.../TFVV...



TFVV...S/TFVV...S Seal kits



CVLS



Screw-on male couplings suitable for general purpose applications. Connectable under residual pressure. High resistance to pressure and flow impulses. Equipped with an additional safety sleeve to prevent accidental disconnections provoked by vibrations. Interchangeable according to ISO 14541 standard.

Accessories and spares



TMVV...



TFVV...S

Push-Pull High Flow Resistant



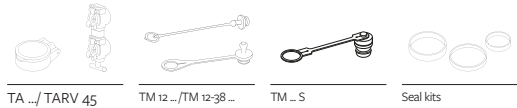
3CFHF



Female couplings ISO 7241 series A compliant, connectable with residual pressure in the line (male side only).

Can withstand a return volumetric flow up to 250 l/min (66 gpm) without damages to the internal components or extrusion of the frontal o-ring seal. Breakaway function.

Accessories and spares



TA .../TARV 45

TM 12 .../TM 12-38 ...

TM ... S

Seal kits

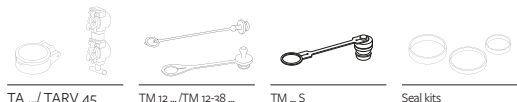
4SRHF



Female couplings ISO 7241 series A compliant, connectable with residual pressure in the line (both sides).

Can withstand a return volumetric flow up to 250 l/min (66 gpm) without damages to the internal components or extrusion of the frontal o-ring seal. Breakaway function.

Accessories and spares



TA .../TARV 45

TM 12 .../TM 12-38 ...

TM ... S

Seal kits

Push-Pull High

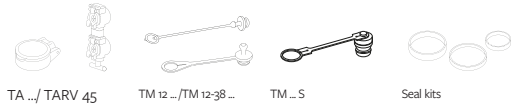


3CKHF



Compact push-pull coupling for application with higher flow rate and limited space, connectable with male under residual pressure. Breakaway function. Can be screwed directly into valve ports or rigid pipes. ISO 7241 part A interchange. Can withstand a return volumetric flow up to 250 l/min (66 gpm) without damages to the internal components or extrusion of the frontal o-ring seal. Reduced dimensions: 15 mm (0,6 inches) shorter than standard version.

Accessories and spares



4SKHF



Compact push-pull couplings for application with higher flow rate and limited space, connectable under residual pressure in both male and female side. Can be screwed directly into valve ports or rigid pipes. Breakaway function. ISO 7241 part A interchange. Can withstand a return volumetric flow up to 250 l/min (66 gpm) without damages to the internal components or extrusion of the frontal o-ring seal. Reduced dimensions: 15 mm (0,6 inches) shorter than standard version.

Accessories and spares



Power Beyond



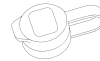
5FPI



Flat Face couplings specifically designed for Power Beyond applications. Compliant with ISO 17567. Connection and disconnection under residual pressure allowed. Equipped with collecting port for clean oil. Available in sizes 1/2" and 3/4".

Flow rate up to 150 l/min (40 gpm), depending on the size.

Accessories and spares



TM 5FPI ...

FPI



Flat Face couplings specifically designed for Power Beyond applications. Compliant with ISO 17567. Breakaway function. Connection under pressure allowed. Available in sizes 1/4", 3/8", 1/2", 3/4", 1".

Flow rate up to 210 l/min (55 gpm), depending on the size.

Accessories and spares



TM FPI ...

Casting



Rear Remote Block



The cast iron block is equipped with two integrated 1/2" cartridges, in accordance to ISO 7241 part A standard. Push-Pull connection type. Connection and disconnection under pressure is allowed, thanks to the lever, specifically designed to ensure depressurization of the internal circuit. Thanks to the special design, this kind of blocks can be connected by means of rigid hoses to distant selective control vales.



GenYus



Standard vertical block for direct connection to Rear SCV. GenYus manifolds can host two 1/2" or 3/4" ISO 7241 part A poppet valve cartridges, or two 5/8" ISO 16028 flat face cartridges. This series can be directly screwed to two of the most popular hydraulic SCV series: Bosch SB24-34 and Danfoss PVBZ 40; also, by means of custom flanged adapters, installation can be extended to other SCV models too.



MultiFaster



PC2o6



MultiFaster compact. It allows connection with mobile plate or stand-alone counterpart couplings, 2 lines 3/8".

The disconnection of stand-alone counterpart couplings is made by dedicated push buttons. This feature can be extended to all MultiFaster range.

Accessories and spares



KIT3FN



Seal kits

P5o8



MultiFaster 4 lines, size o8.

Working pressure 25 Mpa (3,600 psi).

Flow rate @ 0.2 MPa (29 psi): 70 l/min. (18 gpm)

Accessories and spares



KIT2FN



KIT3FN



Seal kits

PSo6



MultiFaster 4 lines 3/8".

Working pressure 25 Mpa (3,600 psi).

Flow rate @ 0.2 MPa (29 psi): 40 l/min. (10 gpm)

Accessories and spares



KIT2FN



KIT3FN



Seal kits

MultiFaster



MC4



It's possible to connect to the male plate either its counterpart or individual 1/4" female quick couplings compliant with ISO 16028.

Accessories and spares



KIT FFB04



KIT FFPO4
KIT 2FFPO4



Seal kits

MC6



It's possible to connect to the male plate either its counterpart or individual 1/4" female quick couplings compliant with ISO 16028.

Accessories and spares



KIT FFB04

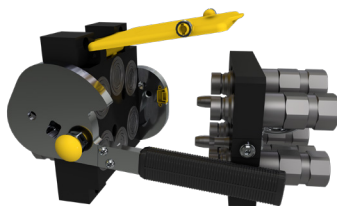


KIT FFPO4
KIT 2FFPO4



Seal kits

Multibreakaway



Multiconnection with 6 lines dash size o8 (1/2"), suitable for rear tractor installation and ensuring the breakaway feature. The MultiFaster plates can get disconnected under pressure by the pulling force exerted by the tractor in case the MultiFaster is unintentionally left connected after detaching the implement. This allows to avoid costs due to replacement of damaged hoses and to machine downtime and to improve work safety.

Accessories and spares



KIT 2FMH



KIT 3FMH



Seal kits

MultiFaster



PLK



PLK series Multifaster has been developed for harvesting applications. Interchangeable according to market driven standards. Two lines size o6, three lines size o9.

Accessories and spares



KIT 2FFBS
KIT 2FFB



KIT3FFP



Seal kits

PLV



PLV series Multifaster has been developed for harvesting applications. Interchangeable according to market driven standards. Three lines size o6, two lines size o9.

Accessories and spares



KIT2FFBS



KIT3FFP



Seal kits

MultiFaster



P5065



MultiFaster 5 lines. 3 lines 04, 2 lines 06. Working pressure 25 Mpa.(3,600 psi)
Flow rate @ 0.2 MPa (29 psi): 3 lines 20 l/min (5 gpm), 2 lines 40 l/min (10 gpm)

Accessories and spares



KIT2FN



KIT3FN



Seal kits

3PLX



Multiconnection 2 lines dash 04 and 2 lines dash 08, with 3 empty seats suitable for electrical connectors. Flat face couplers, CrIII plated. Plate available in two versions: aluminum natural color sandblasted finish, and black painted. Multiconnection is MARKET interchangeable, suitable for Claas combine application



KIT 3FFHo8
KIT FFCL04



Seal kits

Automatic Connection



MultiFaster suitable for Harvesting, with automatic alignment system. Fixed plate designed to self-align with mobile plate to complete connection. This kind of product allows the operator to complete the connection with safety, comfort and time saving.

This MultiFaster can be customized with addition of electrical connectors.

Mobile & Construction Equipment

Construction Equipment is a challenging field of application for quick-release hydraulic couplings, where couplings must perform in tough environmental conditions, due to dust, mud, vibrations, temperature and pressure peaks. Faster has developed several solutions for the CE market, including Flat Face couplings, to avoid any leakage, Screw to Connect couplings, robust and reliable, and Casting solutions, to ensure the connection of multiple lines with decompression feature.

Flat Face



FFH



Flat Face Male and Female couplings. The flat valve shut-off system prevents contamination and spillage.

Real maximum working pressure of 35 MPa (5,000 psi) and Zinc-Nickel plating. Available sizes: 1/8", 1/4", 3/8", 1/2", 5/8", 3/4", 1". Interchangeable according to ISO 16028. Size 1/8" has surface treatment in Mate 500 (CrIII) and it is not ISO interchangeable.

Accessories and spares



TAF ...



TMF 3/8 .../TFF 3/8 ... TM 2FI .../TF 2FI ... TM 2FL .../TMFFH ...S



TF 2FL .../TFFH ...S

3FFH



Flat Face Male and Female couplings. The flat valve shut-off system prevents contamination and spillage. Real maximum working pressure of 35 MPa (5,000 psi) and Zinc-Nickel plating. Connectable under residual pressure. It is possible to couple either a 3FFH Female half under pressure with a FFH Male half, or a 3FFH Male half under pressure with a FFH Female half. Available sizes: 3/8", 1/2", 5/8", 3/4". Interchangeable according to ISO 16028.

Accessories and spares



TAF ...



TMF 3/8 .../TFF 3/8 ... TM 2FI .../TF 2FI ... TM 2FL .../TMFFH ...S



TF 2FL .../TFFH ...S

FSH



Flat Face Female couplings, equipped with sector latching technology.

The sector latching system enables to effectively tackle the Brinelling effect, provoked by high frequency impulse pressures. Real maximum working pressure of 35 MPa (5,000 psi) and Zinc-Nickel plating. Connectable under residual pressure in the Male half when coupled with a 3FFH Male coupling. Available sizes: 3/8", 1/2", 3/4", 1". Interchangeable according to ISO 16028.

Accessories and spares



TAF ...



TMF 3/8 .../TFF 3/8 ... TM 2FI ...



TM 2FI ... S

Screw to Connect



FHV



Screw-on Flat Face couplings, suitable for construction equipment and heavy duty applications. The Zinc-Nickel plating guarantees a remarkable resistance to corrosion. No hose torsion during connection and disconnection thanks to the internal bearing system. Equipped with a safety sleeve to prevent accidental disconnections due to vibrations. Faster proprietary profile. Available sizes: 3/8", 1/2", 3/4", 1", 1-1/4", 1-1/2", 2".

Accessories and spares



TM-TF FHV ...



TM FHV ... S/TF FHV ... S



Seal kits

FLV



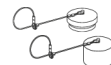
Screw-on Flat Face couplings, with extremely compact and robust design. Ideal for applications in which a flat face connection is required and there are no significant residual pressures to manage.

Available sizes: 3/8", 1/2", 3/4", 1".

Accessories and spares



TM-TF FHV ...



TM FHV ... S/TF FHV ... S



Seal kits

OGV ST



Screw to connect couplings for Oil & Gas application, market interchange.

Equipped with a marker that confirms the complete connection and a longer locking sleeve for an improved engagement. Available sizes: 1-1/2", 2".

Accessories and spares



TM OGV ... S/
TF OGV ... S

Casting Solutions



Auxiliary Lines Block (3 ports)



Castings with cartridges for Construction Equipment. The first cast iron block ever designed to quickly connect and disconnect attachments on skid steers and other light equipment machines. Designed to connect the circuit with residual pressure on both ends. The decompression feature allows to connect the circuit with residual pressure on both ends. 1/2" and 3/4" cartridges can both fit into the 4BD4FH block. Higher flow capability is guaranteed when using 3/4" cartridges. Can be equipped with 4FFH or 4FSH cartridges. Cartridges share all the benefits of the FFH/FSH couplings technology.

Auxiliary Lines Block (3+2 HF ports)



5 Lines block unifies two hydraulic lines of different dimensions in one single casting, giving the option to decompress both lines and collect the drained oil in one single line. The block connects to the machine hydraulic circuit thanks to only two adaptors, and divides the oil flow between the above line and the below line by internal channels properly designed to optimize the flow. This solution offers a great flexibility to the machine in the use of a larger range of attachments and a very easy installation.

MultiFaster

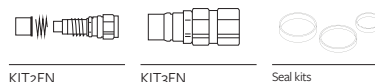


P4A



MultiFaster 4 lines. 2 lines size 1", 2 lines size 1/2", available with electrical connector in 1/2".
Working pressure: 25 MPa. (3,600 psi)
Flow rate @ 0.2 MPa (29 psi): 2 lines 70 l/min (18 gpm), 2 lines 150 l/min. (39 gpm)

Accessories and spares



KIT2FN

KIT3FN

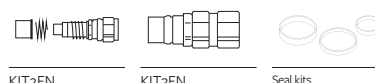
Seal kits

MultiGrease



MultiFaster with special cartridge for central lubrication system and an electrical connector (7 pins) included. 2 lines, size 1/2".
This feature (special cartridge equipped with shunt system) can be extended to all MultiFaster range.

Accessories and spares



KIT2FN

KIT3FN

Seal kits

PH510 S



MultiFaster 4 lines for High Pressure applications. 2 lines size o8, 2 lines size 12. Working Pressure: 46 MPa (6,700 psi). Flow rate @ 0.2 MPa (16 gpm): 2 lines 60 l/min (16 gpm), 2 lines 105 l/min. (28 gpm)

Accessories and spares



KIT2FMH...

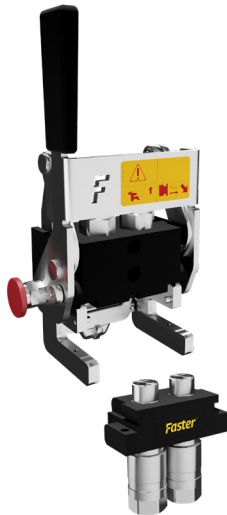
KIT3FMH...

MultiFaster



MultiSlide

MultiFaster 2 lines (size o8) or 3 lines (2 lines size o8, 1 line size o6). Engineered for compact excavators and for Space Critical Installations



Accessories and spares



KIT3F35P...



KIT2F35B...



Seal kits

P508G



MultiFaster 4 lines, size o8, "G" type, with greaser and Zinc-Nickel plating



Accessories and spares



KIT3FN.7



KIT2FN.7



Seal kits

New MultiFaster



P506HD



New Multifaster 350 bar (5,000 psi), 4 lines size o6

Other series available: P508HD (4 lines size o8) and P510HD (2 lines size 12 and 2 lines size o8)

Accessories and spares



KIT3F35P...



KIT2F35B...



Seal kits

MultiQTC



MultiFaster 3 lines (size o6, o8, 2o), suitable for large-scale excavators and demolition excavators (20 to 50-ton class).

Accessories and spares



QTC...M



QTC...F



Seal kits

Industrial & Other Applications

The Industrial applications field is a wide area and it includes several concepts. Products designed for industrial production are used in order to reduce downtime during maintenance operations. This products are generally characterized by different materials and different levels of performances, to match a broad variety of applications.

Sleeve Retraction / ISO 7241 - B

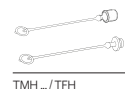


HNV



Male and Female couplings for industrial applications with poppet valve shut-off system. Complete range of sizes available with BSP, NPT and SAE Female threads. Interchangeable according to ISO 7241 Part B. Available sizes: 1/8", 1/4", 3/8", 1/2", 3/4", 1", 1-1/2", 2".

Accessories and spares



TMH.../TFH



TMH...S/TFH...S



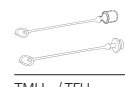
Seal kits

HNV brass



Male and Female couplings for industrial applications with poppet valve shut-off system. Brass version available with NBR or Viton seals. Interchangeable according to ISO 7241 Part B. Available sizes: 1/8", 1/4", 3/8", 1/2", 3/4", 1", 1-1/2".

Accessories and spares



TMH.../TFH



TMH...S/TFH...S



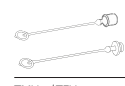
Seal kits

HNV stainless steel



Male and Female couplings for industrial applications with poppet valve shut-off system. Stainless Steel version (AISI 316) with Viton seals. Interchangeable according to ISO 7241 Part B. Available sizes: 1/4", 3/8", 1/2", 3/4", 1", 1-1/2", 2".

Accessories and spares



TMH.../TFH



TMH...S/TFH...S



Seal kits

Flat Face / ISO 16028



FFH



Flat Face Male and Female couplings for industrial applications. Steel version (Mate 1000) with seals in NBR. Interchangeable according to ISO 16028. Available sizes: 1/8", 1/4", 3/8", 1/2", 3/4", 1", 1-1/2".

Accessories and spares



TAF ...

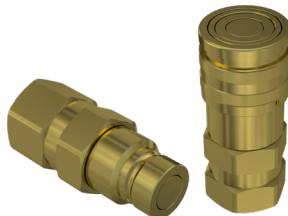


TMF 3/8 .../TFF 3/8 ... TM 2FI .../TF 2FI ...



TM 2FI .../TMFFH ...S
TF 2FL .../TFFH ...S

2FFI brass



Flat Face Male and Female couplings for industrial applications. Brass version with seals in Viton. Interchangeable according to ISO 16028. Available in size 1/2".

Accessories and spares



TM 2FI .../TF 2FI ... TM 2FI .../TF 2FI ...S



2FFI stainless steel



Flat Face Male and Female couplings for industrial applications. Stainless Steel version (AISI 316) with Viton seals. Available sizes: 1/4", 3/8", 1/2", 3/4", 1".

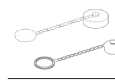
Accessories and spares



TFF 3/8 ...



TM 2FI .../TF 2FI ... TM 2FI .../TF 2FI ...S



Screw to Connect /Faster Interchange



FHV HD

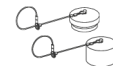


Screw-on flat face couplings, equipped with a double Bearing Ball system and greasing nipple. The Zinc-Nickel plating guarantees a remarkable resistance to corrosion. Connectable by hand up to 35 MPa (5,000 psi) residual pressure in the male half. No hose torsion during connection and disconnection thanks to the internal bearing system. Equipped with a safety sleeve to prevent accidental disconnections due to vibrations. Available sizes: 1", 1-1/4", 1-1/2".

Accessories and spares



TM-TF FHV ...



TM FHV ...S/
TF FHV ...S



Seal kits

VV



Screw to connect standard couplings, double function sleeve. VV series couplings are very robust and reliable and allow to connect under residual pressure. Thanks to a double function sleeve it's also possible to connect a female part with either VV or NV male halves. Faster proprietary profile. Available sizes: 1/4", 3/8", 1/2", 3/4", 1".

Accessories and spares



TMV 38/TFV 38



TMVM .../TFVM ... TMV ...SS/
TFV ...SS



Seal kits

VVS



Screw to connect couplings for high pressure applications. Couplings commonly used for applications characterized by very high working pressures and peaks. Heavy duty internal components guarantee the maximum safety and reliability. Faster proprietary profile. Interchangeable with Faster VV series. Available sizes: 1/4", 3/8", 1/2", 3/4", 1-1/4", 1-1/2", 2".

Accessories and spares



TMVM .../TFVM ... TMV ...SS/
TFV ...SS



Seal kits

High Pressure



PVVM



Screw to Connect Male and Female couplings, suitable for High Pressure applications. Equipped with a robust metal-to-metal sealing poppet valve. Maximum Working Pressure: 100 MPa (14,500 psi). Connection under pressure: allowed residual in one of the two halves. Interchangeable according to ISO 14540. Available sizes: 1/4", 3/8".

Accessories and spares



TMP ../ TFP ..

Seal kits

PVSM



Screw to Connect Male and Female couplings, suitable for High Pressure applications. Equipped with a metal-to-metal sealing ball valve. Maximum Working Pressure: 72 MPa (10,500 psi). Connection under pressure: allowed residual in one of the two halves. Interchangeable according to ISO 14540. Available in size 3/8".

Accessories and spares



TMP ../ TFP ..

Seal kits

FFHP



Flat Face Male and Female couplings, suitable for High Pressure applications. Flat valve shut-off system prevents contamination and spillage. Zinc-Nickel plating ensures good resistance to wear and corrosion. Maximum Working Pressure: 72 MPa (10,500 psi). Available sizes: 1/4", 3/8".

Oil & Gas / Snap Tite



OGV



Standard screw-to-connect coupling suitable for Oil & Gas applications. Robust sleeve design, poppet valve and ACME connection thread. Connection under pressure: allowed residual in one of the two halves.

Available sizes: 1-1/2", 2".

Accessories and spares



TM OGV ... S/
TF OGV ... S

OGF



Male and Female couplings, suitable for Oil & Gas applications. Poppet valve designed to help flow and allow connection with TNL parts (free flow) same series. Interchangeable with Faster TNL couplings.

Available sizes: 1/4", 3/8", 1/2", 3/4", 1", 1-1/4", 1-1/2".

Accessories and spares



TMH .../TFH ... Seal kits

TNV



Flat Face Male and Female couplings suitable for Oil & Gas applications. The Flat Face design guarantees very low spillage and prevents external contamination. Equipped with locking ball to prevent accidental disconnection. Interchangeable with Snap-tite 71 series. Available in sizes: 1/4", 3/8", 1/2", 3/4", 1".

Accessories and spares



Seal kits

BOP



HNV FR



Male and Female couplings with poppet valve shut-off system, Lloyd's certified, suitable for Oil & Gas applications. Thanks to special components and seals, HNVFR couplings are API 16 D certified and suitable for BOP application. Interchangeable according to ISO 7241 Part B. Available sizes: 1/2", 3/4", 1"

Accessories and spares



TMH .../TFH

FHV FR



Screw-to-Connect Flat Face couplings, Lloyd's certified, suitable for Oil & Gas applications. Equipped with a safety sleeve to help preventing accidental disconnections due to vibrations. Zinc-Nickel plating. Thanks to special components and seals, FHVFR couplings are API 16 D certified and suitable for BOP application. Connectable with residual pressure in the Male half up to 35 MPa. Faster proprietary profile. Available sizes: 3/4", 1"

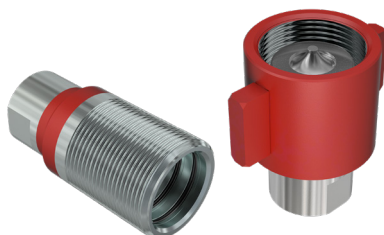
Accessories and spares



TM-TF FHV ...

TM FHV ...S/
TF FHV ...S

OGV FR



Screw to Connect Male and Female couplings, Lloyd's certified, suitable for Oil & Gas applications. Robust sleeve design, poppet valve and ACME connection thread. Thanks to special components and seals, OGVFR couplings are API 16 D certified and suitable for BOP application. Connection under pressure: allowed residual in one of the two halves. Available sizes: 3/4", 1", 1-1/4"

Accessories and spares



TM OGV ... S/
TF OGV ... S

Refrigeration



RF



Screw to connect couplings for air conditioning & refrigeration application. Interchangeability according to market driven standards. Available in several versions in steel, brass and with copper sweat braze adaptor Available in sizes: 1/4", 3/8", 1/2", 3/4", 1".

Accessories and spares



TMRF .../TFRF ...

RFL



Screw to connect female couplings for air conditioning & refrigeration application, low friction sleeve.

The female couplings are equipped with a low friction sleeve in order to reduce connection effort and friction. Fully interchangeable with RF series same size. Available in sizes: 1/4", 3/8", 1/2", 3/4", 1".

Accessories and spares



TMRFL .../TFRFL ...

RFLS - RFS



RFLS screw-to-connect female couplings are equipped with a low friction sleeve to reduce connection effort together with an integrated safety sleeve to prevent accidental disconnections.

Corresponding male couplings RFS series are characterized by Faster profile interchangeability. Available in sizes: 1/4", 3/8", 1/2", 3/4".

Accessories and spares



TMRFLS .../
TFRFLS ...

Other Products

VU



Standard unidirectional check valves, acting as a safety device into hydraulic systems. Standard versions contain a spring set to open the valve at 35 kPa (5 psi); Normally available with inlet and outlet Female threads. Wide range of calibrations available, from 10 (1,5 psi) to 950 kPa (140 psi). Available sizes: 1/4", 3/8", 1/2", 3/4", 1", 1-1/4", 1-1/2", 2".

VUC



Compact check valves, acting as a safety device into hydraulic systems. Very compact design, assembled with only one piece body. Standard cracking pressure 35 kPa (5 psi). Available sizes: 1/4", 3/8", 1/2", 3/4", 1".

DF



Diagnostic Flat Face Male and Female couplings, specifically designed to measure the internal pressure of hydraulic circuits. Male part to be mounted on the hydraulic line, Female part to be connected to gauge instruments. Interchangeable according to ISO 15171-1. Available in size 1/4".

Accessories and spares



TFDF 04

Other Products

Swivles Cartridge

Taimi's Screw-in Cartridge is the result of the shank-nut assembly and it is designed to be integrated into steel housings or hydraulic manifolds. It simply screws in, becoming a short and very sturdy swiveling coupling that will live through high pressure and side loads.



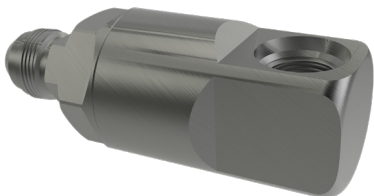
Accessories and spares



Seal kits

90° Swivles

Taimi's 90°swivel is the result of a shank-nut assembly inserted into a housing. It is considered a stand alone swivel with a 90° thread.



Accessories and spares

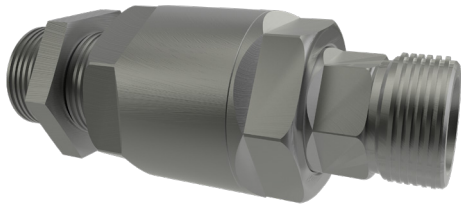


Seal kits

Other Products

In-Line swivles

Taimi's In-Line Swivel is the result of a shank-nut assembly inserted into a housing. It is considered a stand alone swivel.



Accessories and spares



Seal kits

Quick Swivel

Solution integrating a Taimi Swivel into a flat face male coupling (FFH or 3FFH series), allowing the coupler to rotate under pressure without getting damaged. This product allows quick connection/disconnection of a hydraulic circuit while providing all of the benefits of a traditional swivel preventing premature wear, hose failure and system downtime. Both "SC" and "SD" types are compatible with ISO 16028 standard, with the "SD" type specifically designed to facilitate connection under residual pressure, an enhanced feature beyond the "SC" type capabilities



Accessories and spares



Seal kits

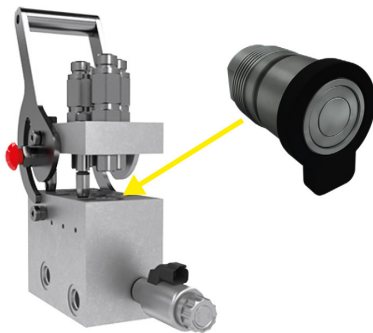
Special Solutions

FFC



Self-aligning flat face couplings for multiconnections. Misalignments up to ± 0.5 mm (0,02 inches) and $\pm 1^\circ$ (angular) are automatically compensated during the connection. Stainless steel components (AISI 316) with Viton seals. Faster proprietary profile.

FFHB



Cartridges installable into hydraulic manifolds to ensure perfectly flat mating surfaces. Individual connection to stand-alone ISO 16028 couplings and simultaneous multiple connection by means of a lever mechanism are both available options. When coupled to stand-alone couplings, disconnection is triggered by pushing the acetal resin button. Colored buttons help to avoid mix up of hydraulic lines.

Accessories and spares



FFHB ... TOOL

QTC



These couplings are designed for CE heavy duty applications and suit custom-designed automatic multiconnection systems, allowing a quick change of hydraulic tools managed from the driver's cab. Easy front installation on plate by seeger rings. High robustness and minimized energy consumption thanks to an optimized design of internal components.

Accessories and spares



Seal kits

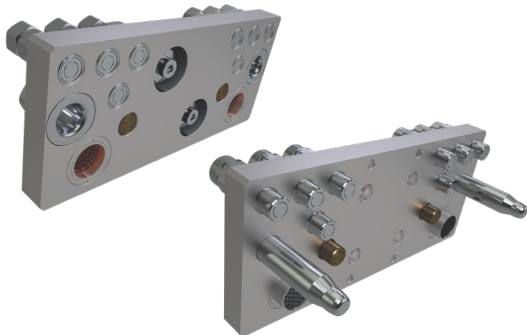
Automatic Multiconnection

Steel Industry



Multiconnection suitable for steel industry application (Rolling), with automatic alignment system. Rolling is a metal forming process in which metal stock is passed through one or more pairs of rolls to reduce thickness, or to make thickness uniform. The group of rolls is enclosed in a cage. This Multiconnection can be customized with the addition of electrical connectors.

Thermoforming Industry



Multiconnection suitable for thermoforming industry application, with automatic alignment system. Thermoforming is a manufacturing process where a plastic sheet is heated to a pliable forming temperature, formed to a specific shape in a mold, and finally trimmed to create a usable product. This technology is typically employed, other than in the automotive, sanitary and industrial sectors, in the manufacturing of refrigerators. This Multiconnection can be customized with the addition of electrical connectors.

Automotive Engine Test



Multiconnection suitable for End-of-line engine testing. The automatic connection of multiple lines (hydraulic, pneumatic, electrical) allows quick and reliable fill of external media needed to run the test, contributing to a massive reduction of the setup time for the whole process.

MultiFaster for Industrial Applications



M001



MultiFaster 2 lines size o6. Working Pressure 25 MPa (3,600 psi). This special MultiFaster is designed for CNC machines applications. CNC machines are highly automated manufacturing tools controlled by a computer. Thanks to this MultiFaster it's possible to pressurize all the hydraulic cylinders which block the pieces with one single maneuver, reducing the overall cycle time.

Accessories and spares



KIT2FN

KIT3FN

P10A



MultiFaster 10 lines. 5 lines size o8, 5 lines size o4. Working Pressure 25 MPa (3,600 psi).
Flow rate @ 0.2 MPa (29 psi):
5 lines 70 l/min (18 gpm), 5 lines 20 l/min (5 gpm).

Accessories and spares



KIT3FN

KIT2FN

P12A



MultiFaster 12lines. 10 lines size o8, 2 lines size o4. Working Pressure 25 MPa (3,600 psi). Flow rate @ 0.2 MPa (29 psi): 10 lines 70 l/min (18 gpm), 2 lines 20 l/min (5 gpm).

Accessories and spares



KIT2FN

KIT3FN

MultiFaster for High Pressure



PH216S



MultiFaster for High Pressure applications. 2 lines size 16. Working Pressure: 46 MPa (6,700 psi). Flow rate @ 0.2 MPa (29 psi): 150 l/min (16 gpm).

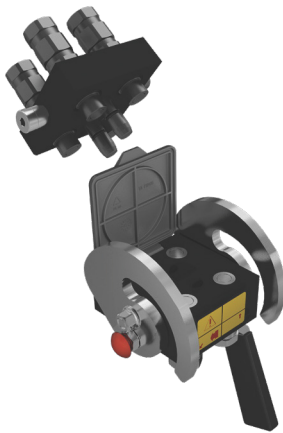
Accessories and spares



KITFHB

KIT3FHP

PH408S



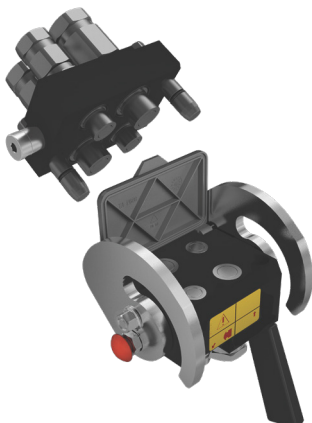
MultiFaster for High Pressure applications. 4 lines size 08. Working Pressure: 46 MPa (6,700 psi). Flow rate @ 0.2 MPa (29 psi): 60 l/min (16 gpm).

Accessories and spares



KITFHB KIT3FHP

PH510S



MultiFaster 4 lines for High Pressure applications. 2 lines size 08, 2 lines size 12. Working Pressure: 46 MPa (6,700 psi). Flow rate @ 0.2 MPa (29 psi): 2 lines 60 l/min (16 gpm), 2 lines 105 l/min (28 gpm).

Accessories and spares



KITFHB

KIT3FHP

We are the global reference
in quick-release hydraulic couplings

Faster Srl

Via Ludovico Ariosto, 7
I-26027 Rivolta d'Adda
Cremona, Italy
T +39 0363 377211
F +39 0363 377333
info@fastercouplings.com
www.fastercouplings.com