

Faster[®]
A HELIOS TECHNOLOGIES COMPANY

Mobile & Construction
Equipment



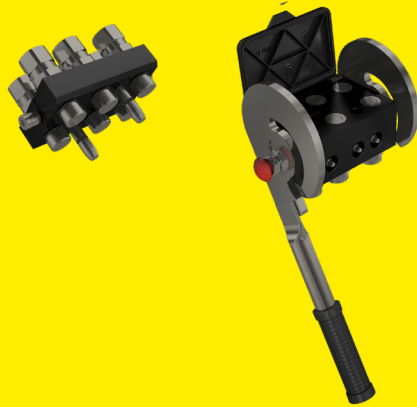
Faster offers a dedicated range of products for Mobile & Construction Equipment, suitable for both Light Equipment, such as Skid Steer and Multiutilities, and Heavy-duty applications.

Faster has developed several solutions for the Mobile & Construction Equipment market, including Flat Face couplings, robust and reliable Screw to Connect couplings, Casting solutions with integrated pressure release system and MultiFaster for connection of multiple lines. For applications that are typical

in the construction market, quick-release couplings are required to adapt themselves to work in dusty environments with sand and dirt. The seals used are specifically designed from polymer blends able to sustain the deterioration and consumption induced by the hostile work conditions.



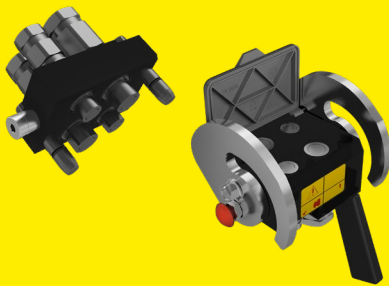
Discover our MultiFaster G Series



P6o8G



Discover our MultiFaster Range



PH51o



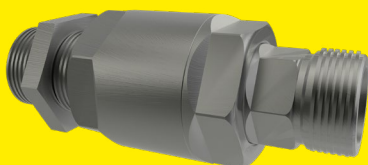
Discover our Couplings Range



CVV



Discover our Swivel Range



Swivel



FFH/3FFH/FSH



The Ultimate Flat Face Coupling. 350 Bar High-Pressure Performance

The FFH Series sets the gold standard for ISO 16028 flat face couplings, specifically engineered to eliminate leaks and contamination under extreme conditions. By merging a consistent 350 bar working pressure with the pressure-relief technology of the 3FFH and the reinforced architecture of the FSH, this series delivers the definitive solution for the most demanding hydraulic environments.



Key Specs:

- Interchange:** ISO 16028
- Size:** from 1/4" to 1-1/4"
- Connection:** Push
- Max Pressure:** up to 35 MPa (5,075 psi)
- Surface Treatment:** MATE 1000 (Zn-Ni)

Why choose these Series?

Full-Duty 350 Bar Rating: Unlike standard couplings, the FFH series is purpose-built to operate reliably at 350 bar (5,075 psi) across the range. This high-pressure capability ensures maximum safety and performance even during severe pressure peaks and heavy-duty work cycles.

1,000-Hour Corrosion Shield: The premium Zn-Ni coating ensures the coupling remains operational in corrosive environments. Tested to withstand over 1,000 hours of Neutral Salt Spray (NSS) before red rust appears, it guarantees a long service life and maintains the integrity of the flat face seal.

Advanced Brinelling Resistance: To support its high-pressure rating, the series incorporates the FSH reinforced design. By utilizing latching sectors instead of standard balls, the coupling distributes loads over a larger surface area. This drastically reduces Brinelling and mechanical wear, even in systems with high-frequency pulsations.

4BD4FH



The Standard for Auxiliary Lines

The 4BD4FH is the original decompression block that defined the industry standard for compact loaders. Decades after its market-leading debut, it remains the preferred choice for major OEMs. Designed for intuitive use, it manages two main lines (supply and return) for effortless connection under residual pressure, plus a third line for motor drainage. Its modular design allows for a quick flow performance upgrade or downgrade, as the 1/2" and 3/4" cartridges are easily interchangeable within the same body.



Key Specs:

- Interchange:** ISO 16028
- Size:** 1/2" or 3/4" (Main) and 3/8" (Drain)
- Connection/Disconnection:** Intuitive Push / Sleeve Retraction
- Max Pressure:** 35 MPa (5,075 psi)
- Flow Rate:** 100 l/min to 145 l/min (26 gpm to 38 gpm)

Why choose 4BD4FH?

First-to-Market Decompression: The pioneer system for effortless coupling even with high residual pressure on both machine and attachment sides.

Unmatched Versatility: Simplify fleet management by swapping 1/2" and 3/4" cartridges to meet specific flow requirements without replacing the block.

Field-Proven Reliability: A rugged, high-resistance design trusted by leading global brands to withstand extreme pressure peaks and vibrations.

5BDHF



Advanced Control. The Evolution of Auxiliary Blocks.

The 5BDHF Series is the high-performance evolution of hydraulic auxiliary blocks, specifically engineered for modern loaders. Building on the proven success of the 3-line version (4BD4HF), this manifold manages up to five hydraulic lines in a single, robust body, offering a centralized connection point for complex attachments while maintaining a compact footprint.



Key Specs:

- Interchange:** ISO 16028
- Size:** 1/2" (2 ports), 3/4" (2 ports) and 3/8" (1 port)
- Connection:** Intuitive Push / Sleeve Retraction
- Max Pressure:** up to 35 MPa (5,075 psi)
- Flow Rate:** 70 l/min (26 gpm) on 1/2" lines, 145 l/min (38 gpm) on 3/4" lines.

Why choose 5BDHF?

Unmatched Versatility & High Flow Ready: Enjoy total flexibility without the need for cartridge changeovers when switching from standard to high-flow implements. The block simultaneously hosts two 1/2" cartridges, two 3/4" couplings, and a dedicated 3/8" drainage line, eliminating hose clutter and streamlining operations.

Smart Design & Easy Installation: Engineered to fit the architecture of most CTL and SSL models on the market, the 5BDHF features a compact two-input line design. Integrated fixing holes on three sides of the manifold ensure effortless installation and seamless integration.

Advanced Dual Decompression System: Effortless coupling is guaranteed by two specialized systems: the 1/2" lines utilize our patented decompression technology (shared with the 3-port series), while the 3/4" lines are equipped with a reliable manual activation system to handle high residual pressure.

FHV



The Heavy-Duty Standard. High Pressure & Zero Leakage.

The **FHV Series** is the premier screw-to-connect solution designed for the most grueling hydraulic applications. Engineered to master high working pressures and severe flow peaks, this series provides a secure, threaded connection that eliminates the risks of premature wear and accidental disconnection in high-vibration environments.



Key Specs:

- Interchange:** Faster
- Size:** from 3/8" to 2"
- Connection:** Screw-to-connect
- Max Pressure:** up to 46 MPa (6,670 psi)
- Flow Rate:** up to 750 l/min (198 gpm)
- Surface Treatment:** MATE 1000 (Zn-Ni)

Why choose FHV?

Tool-Free Connection Under Pressure: Engineered for maximum operator comfort, the FHV allows for easy connection and disconnection manually—without the need for wrenches or specialized tools. The advanced internal valve design ensures a smooth process even when high residual pressure is trapped on both the male and female sides.

Dual Safety & Vibration Resistance: Built to withstand high-frequency pressure impulses and heavy vibrations, the robust screw-on mechanism is reinforced by an **additional safety sleeve**. This secondary locking feature prevents unintended disconnections, making it the ideal choice for hydraulic hammers and heavy demolition tools.

Eco-Friendly Flat Face Design: The high-performance flat face valve guarantees zero fluid loss during connection and disconnection. This protects the environment from oil spills while preventing air and contaminants from entering the hydraulic circuit, ensuring long-term system reliability.

FLV



The Global Standard for Secure Connections

The **FLV Series** is one of the most widely recognized and utilized screw-to-connect flat face solutions on the market. Engineered for professionals who demand a proven, globally compatible design, this series combines the cleanliness of flat face technology with the mechanical security of a threaded connection, making it a staple in premium hydraulic systems worldwide.



Key Specs:

- Interchange:** Market Standard
- Size:** From 3/8" to 1-1/4"
- Connection:** Screw-to-connect
- Max Pressure:** Up to 42 MPa (6,090 psi)
- Surface Treatment:** MATE 1000 (Zn-Ni)

Why Choose FLV?

Market-Leading Compatibility & Reliability: As a cornerstone of modern hydraulic portfolios, the FLV series offers seamless integration and global availability. Its widespread adoption by major manufacturers ensures that you are investing in a proven, high-standard solution that is recognized and trusted across the industry.

Clean Performance & Controlled Coupling: The FLV is the ideal choice for applications requiring a 100% leak-free interface with zero air inclusion. While optimized for circuits without significant trapped pressures, the robust screw-on system still allows for effortless, manual connection even when residual pressures of a few bar are present.

Versatile Applications: From the precision required in **stringing equipment for overhead power lines** to the extreme loads of **modular trailers** and **telescopic crawler cranes**, the FLV is built to perform. Its rugged design makes it a top-tier choice for **crawled excavators**, **hydraulic cranes** and **undercarriage systems**, providing a secure connection that resists vibration and environmental stress.

NEW MULTIFASTER 350 BAR



Built to Complement. Engineered for More Pressure.

The latest addition to the MultiFaster family is specifically engineered to align with the current requirements of Construction and Earthmoving equipment. This heavy-duty series ensures consistent performance at 350 bar (5,000 PSI), offering a highly reliable solution for demanding multi-connection needs.



Key Specs:

Interchange: Faster

Configurations: 4 lines size 06 (P506HD), 4 lines size 08 (P508HD), or 2 lines size 08 + 2 lines size 12 (P510HD)

Connection: Lever (Left-hand and right-hand versions available)

Max Pressure: 35 MPa (5,075 psi) across all lines

Temperature Range: -25°C to +100°C (-13 °F to +212 °F)

Surface Treatment: MATE 500 (CrIII)

Why choose the New 350 bar Series?

Enhanced Pressure Performance: Engineered to withstand a continuous working pressure of 350 bar, making it fully compliant with the latest global standards for heavy-duty hydraulic applications.

Exceptional Operating Comfort: Exceptional Operating Comfort: New-generation lever for soft, effortless operation. Available in LH (Left Hand) or RH (Right Hand) configurations to meet specific installation needs.

Durable & Identifiable: The series features a distinctive black visual coating and dedicated labeling for easy identification on the field, combined with premium CrIII treatment for superior corrosion resistance.

MULTISLIDE



Compact Efficiency. Seamless Connection.

Specifically designed for compact excavators (30-70 quintals) and installations with limited space, MultiSlide is the innovative solution that simplifies hydraulic connections on the field. This compact multiconnection system ensures a smooth and effortless experience, even when dealing with residual pressure.



Key Specs:

Interchange: Faster

Size: 1/2" (available in 2-line or 3-line configurations with an additional 3/8" port)

Connection: Lever (Sliding bracket system)

Max Pressure: up to 35 MPa (5,075 psi)

Temperature Range: -25 °C to +120 °C (-13 °F to +212 °F)

Surface Treatment: MATE 500 (CrIII)

Why choose MultiSlide?

Seamless Retrofit: Includes a dedicated metal plate for quick and easy installation on existing machines, ensuring perfect integration on the excavator arm.

Hands-Free Operation: The patented sliding bracket allows the operator to have both hands free during alignment, reducing physical strain and improving safety.

Maximum Durability: The lever-assisted locking system eliminates brinelling risks, while the parking station protects the plate when not in use.

MULTIQTC



Manual Simplicity. Demolition Power.

The **MultiQTC Series** is specifically engineered for large-scale demolition excavators, offering a high-productivity manual solution for the most demanding environments. By combining heavy-duty primary lines with a mirrored architecture, it provides a high-performance alternative to fully automatic systems at a fraction of the investment and maintenance costs.



Key Specs:

- Interchange:** Faster QTC Series
- Size:** 1-1/4" (Primary lines), 1/2" (Pilot), 3/8" (Drain)
- Connection:** Lever with double locking mechanism
- Max Pressure:** 46 MPa (6,700 psi)
- Flow Rate:** up to 800 l/min (211 gpm)

Why choose MultiQTC?

High-Flow Performance & Project ROI: Engineered for large-scale demolition, it handles flow rates up to 800 l/min, ensuring heavy-duty attachments like shears operate at peak speed. This efficiency allows a single excavator to perform multiple roles through frequent tool changes, significantly optimizing overall project costs and machine uptime.

Precision Handling with Dual-Hand Safety: The system features a unique auxiliary locking mechanism that allows the operator to maneuver the mobile part with both hands. This "hands-free" lever support ensures maximum precision, safety, and operational comfort during coupling, even in the harshest site conditions.

Compact Reliability & Debris Protection: The optimized connection lever is designed to be ultra-compact, minimizing the risk of interference with hoses or debris during complex boom movements. Built on the rugged QTC architecture, it guarantees a leak-free, dust-resistant connection that stands up to extreme demolition environments.

QUICK SWIVEL



Unmatched Durability. Leak-Free Performance.

The **Quick Swivel** is an engineered solution that integrates a Taimi Swivel — renowned for its patented, leak-free technology — directly with a Faster ISO 16028 flat face quick coupling. Specifically designed for demanding hydraulic applications involving frequent tool changes and hoses rotating under pressure, this system provides a critical advantage: it eliminates mutual rotation between the two coupling halves. By absorbing rotational stress, the Quick Swivel prevents torque-induced hose fatigue and ensures no failures occur due to coupling wear.



Key Specs:

- Interchange:** ISO 16028
- Size:** 1/2", 3/4"
- Connection:** Push
- Max Pressure:** up to 35 MPa (5,075 psi)
- Surface Treatment:** MATE 1000 (Zn-Ni)

Why Choose Quick Swivel?

Vast Application Range: This solution is engineered to perform across diverse and demanding sectors, from forestry harvesters and roadside maintenance machines to high-performance heavy-duty attachments such as mulchers for compact loaders.

Best-in-Class Performance: Quick Swivel delivers an unparalleled fluid handling solution by merging the industry-leading standards of Faster FFH and 3FFH series with the patented, leak-free technology of Taimi Swivels, ensuring 350 bar continuous pressure rating and superior 1,000-hour corrosion resistance.

Scalable Integration: Designed for maximum versatility, this technology is not only compatible with any ISO 16028 counterpart but is also engineered to be scaled and integrated into Faster's extensive portfolio of standard and tailored auxiliary lines blocks.

We are the global reference
in quick-release hydraulic couplings

Faster Srl

Via Ludovico Ariosto, 7
I-26027 Rivolta d'Adda
Cremona, Italy
T +39 0363 377211
F +39 0363 377333
info@fastercouplings.com
www.fastercouplings.com