

Faster

Industrial & High Pressure



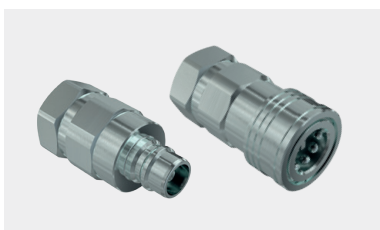
Industrial



HNV Steel

General purpose quick-release couplings interchangeable according to ISO 7241 standards part B. Carbon Steel versions.

Interchange	ISO 7241 part B
Available Size	1/8" to 2"
Valve Style	Poppet
Connection Type	Sleeve Retraction
Materials	High Grade Carbon Steel
Operating Pressure	Up to 50 MPa depending on the size
Flow Rate @ 0.2 MPa	Up to 1600 l/min depending on the size
Connection under pressure	Not allowed
Disconnection under pressure	Not allowed



TNV

Standard couplings. Their valves have been designed to help flow and to allow connection with TNL parts (free flow) same series.

Interchange	Market
Available Size	1/4" to 1-1/2"
Valve Style	Poppet
Connection Type	Sleeve Retraction
Materials	High Grade Carbon Steel
Operating Pressure	Up to 30 MPa depending on the size
Flow Rate @ 0.2 MPa	Up to 450 l/min depending on the size
Connection under pressure	Not Allowed
Disconnection under pressure	Not Allowed



HNV Brass

General purpose quick-release couplings interchangeable according to ISO 7241 standards part B. Brass versions.

Interchange	ISO 7241 part B
Available Size	1/8" to 2"
Valve Style	Poppet
Connection Type	Sleeve Retraction
Materials	Brass
Operating Pressure	Up to 22 MPa depending on the size
Flow Rate @ 0.2 MPa	Up to 1600 l/min depending on the size
Connection under pressure	Not allowed
Disconnection under pressure	Not allowed



TNL

Standard couplings, free flow. Assembled without internal valves they have been designed to maximize flow. Fully interchangeable with TNV versions.

Interchange	Market
Available Size	1/4" to 3/4"
Valve Style	None
Connection Type	Sleeve Retraction
Materials	High Grade Carbon Steel
Operating Pressure	Up to 27 MPa depending on the size
Flow Rate @ 0.2 MPa	Up to 170 l/min depending on the size
Connection under pressure	Not Allowed
Disconnection under pressure	Not Allowed



HNV Stainless Steel

General purpose quick-release couplings interchangeable according to ISO 7241 standards part B. Stainless Steel versions.

Interchange	ISO 7241 part B
Available Size	1/4" to 2"
Valve Style	Poppet
Connection Type	Sleeve Retraction
Materials	Stainless Steel AISI 316
Operating Pressure	Up to 35 MPa depending on the size
Flow Rate @ 0.2 MPa	Up to 1600 l/min depending on the size
Connection under pressure	Not allowed
Disconnection under pressure	Not allowed

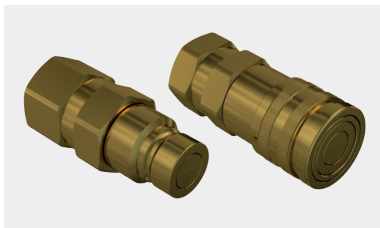


VU-VUC

Check Valves for hydraulic systems. Standard (VU) and compact (VUC) versions.

Interchange	---
Available Size	1/4" to 2"
Valve Style	Poppet
Connection Type	---
Materials	High Grade Carbon Steel
Operating Pressure	Up to 50 MPa depending on the size
Flow Rate @ 0.2 MPa	Up to 700 l/min depending on the size
Connection under pressure	---
Disconnection under pressure	---

Industrial



Flat Face Brass

Flat-Face quick-release couplings interchangeable according to ISO 16028 standards. Brass versions.

Interchange	ISO 16028
Available Size	1/2"
Valve Style	Flat Face
Connection Type	Push to Connect
Materials	Brass
Operating Pressure	12 MPa
Flow Rate @ 0.2 MPa	100 l/min
Connection under pressure	Not allowed
Disconnection under pressure	Not allowed



VVS Steel

Screw-to-connect quick-release couplings for high pressure applications. Carbon Steel versions.

Interchange	Faster
Available Size	1/4" to 2"
Valve Style	Poppet
Connection Type	Screw to Connect
Materials	High Grade Carbon Steel
Operating Pressure	Up to 80 MPa depending on the size
Flow Rate @ 0.2 MPa	Up to 1000 l/min depending on the size
Connection under pressure	Allowed under residual pressure
Disconnection under pressure	Not allowed



Flat Face Stainless Steel

Flat-Face quick-release couplings interchangeable according to ISO 16028 standards. Stainless Steel versions.

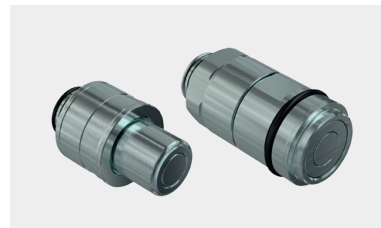
Interchange	ISO 16028
Available Size	1/4" to 1"
Valve Style	Flat Face
Connection Type	Push to Connect
Materials	Stainless Steel AISI 316
Operating Pressure	Up to 25 MPa depending on the size
Flow Rate @ 0.2 MPa	Up to 210 l/min depending on the size
Connection under pressure	Not Allowed
Disconnection under pressure	Not allowed



VVS Stainless Steel

Screw-to-connect quick-release couplings for high pressure applications. Stainless Steel versions.

Interchange	Faster
Available Size	1/4" to 2"
Valve Style	Poppet
Connection Type	Screw to Connect
Materials	Stainless Steel AISI 316
Operating Pressure	Up to 65 MPa depending on the size
Flow Rate @ 0.2 MPa	Up to 1000 l/min depending on the size
Connection under pressure	Allowed under residual pressure
Disconnection under pressure	Not allowed



FFC Stainless Steel

Self-aligning Flat-Face quick-release couplings for cartridge installation. Stainless Steel versions.

Interchange	Market
Available Size	1/4" to 1/2"
Valve Style	Flat Face
Connection Type	Special Connection
Materials	Stainless Steel AISI 316
Operating Pressure	Up to 45 MPa depending on the size
Flow Rate @ 0.2 MPa	Up to 35 l/min depending on the size
Connection under pressure	Not Allowed
Disconnection under pressure	Not allowed



M624A

Special multiconnection systems for Industrial Applications. (in the picture M624 series for Steel Industry).

Interchange	Faster
Valve Style	Flat Face
Connection Type	Special Connection

High Pressure



PVVM

Screw-to-connect quick-release couplings for very high pressure applications. Interchangeability according to ISO 14540 standards type P.

Interchange	ISO 14540 type P
Available Size	1/4" & 3/8"
Valve Style	Poppet
Connection Type	Screw to Connect
Materials	High Grade Carbon Steel
Operating Pressure	Up to 103 MPa depending on the size
Flow Rate @ 0.2 MPa	Up to 20 l/min depending on the size
Connection under pressure	Allowed under residual pressure
Disconnection under pressure	Not allowed



UHP 100

Quick-release couplings for ultra high pressure applications with safety sleeve and double alert ring. Working pressure 100 MPa.

Interchange	Market
Available Size	1/4"
Valve Style	Poppet
Connection Type	Sleeve Retraction
Materials	High Grade Carbon Steel
Operating Pressure	100 MPa
Flow Rate @ 0.2 MPa	4 l/min
Connection under pressure	Not Allowed
Disconnection under pressure	Not Allowed



PVSM

Screw-to-connect quick-release couplings for very high pressure applications. Interchangeability according to ISO 14540 standards type S.

Interchange	ISO 14540 type S
Available Size	3/8"
Valve Style	Ball
Connection Type	Screw to Connect
Materials	High Grade Carbon Steel
Operating Pressure	72 MPa
Flow Rate @ 0.2 MPa	14 l/min
Connection under pressure	Allowed under residual pressure
Disconnection under pressure	Not allowed



UHP 150

Quick-release couplings for ultra high pressure applications with safety sleeve and double alert ring. Working pressure 150 MPa.

Interchange	Market
Available Size	1/4"
Valve Style	Poppet
Connection Type	Sleeve Retraction
Materials	High Grade Carbon Steel
Operating Pressure	150 MPa
Flow Rate @ 0.2 MPa	4 l/min
Connection under pressure	Not Allowed
Disconnection under pressure	Not Allowed



FFHP

Flat-Face quick-release couplings for very high pressure applications.

Interchange	Market
Available Size	1/4" & 3/8"
Valve Style	Flat Face
Connection Type	Push to Connect
Materials	High Grade Carbon Steel
Operating Pressure	Up to 72 MPa depending on the size
Flow Rate @ 0.2 MPa	Up to 46 l/min depending on the size
Connection under pressure	Not allowed
Disconnection under pressure	Not allowed

Faster has a product range specifically designed for industrial and high pressure applications

In the field of Industrial and High Pressure application, the search is always on for products, accessories and systems that can reduce downtime during changeovers of parts performed on machine tools or rescue equipment tools.

To connect and disconnect rapidly, with pressure in the system, **Faster** has a product range of flat-face quick-release couplings and multiconnection systems, designed and realized according with the high safety standard required in this field of application. These specifically

products are characterized by a great compactness, modularity and no spillage during connection and disconnection. We have widened our product portfolio with couplings that can work with peaks of pressure up to 1500 bar, paying particular attention to safety and quality of every single component. Our challenge is to increase our competitiveness by offering high quality products with agile production processes, delivering, as we always do, top solutions to our customers.

We are the global reference
in quick-release hydraulic couplings

Faster Spa

Via Ludovico Ariosto, 7
I-26027 Rivolta d'Adda
Cremona, Italy
T +39 0363 377211
F +39 0363 377333
info@fastercouplings.com
www.fastercouplings.com