

**Faster**  
*easier to connect.*

**Construction Equipment**



# Couplings

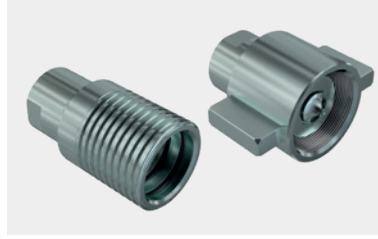
## Screw to Connect



### VVS

Screw-to-connect quick-release couplings, poppet valve.  
Carbon Steel version.

Interchange	Faster
Available Size	1/4" to 2"
Valve Style	Poppet
Connection Type	Screw to Connect
Materials	High Grade Carbon Steel
Operating Pressure	Up to 80 MPa depending on the size
Flow Rate @ 0.2 MPa	Up to 1000 l/min depending on the size
Connection under pressure	Allowed under residual pressure
Disconnection under pressure	Not allowed



### OGV

Screw-to-connect quick-release couplings, robust sleeve design, poppet valve and ACME connection thread.

Interchange	Market
Available Size	3/4" to 2"
Valve Style	Poppet
Connection Type	Screw to Connect
Materials	High Grade Carbon Steel
Operating Pressure	35 MPa
Flow Rate @ 0.2 MPa	Up to 320 l/min depending on the size
Connection under pressure	Allowed under residual pressure
Disconnection under pressure	Not allowed



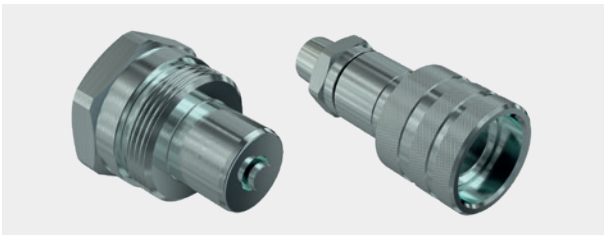
### CVV

Screw-on couplings connectable under residual pressure. High resistance to pressure and flow impulses. Size 1/4" to 3/4" interchangeable according to ISO 14541 standards.

Interchange	Market; ISO 14541
Available Size	1/4" to 1-1/2"
Valve Style	Poppet
Connection Type	Screw to Connect
Materials	High Grade Carbon Steel
Operating Pressure	Up to 37 MPa depending on the size
Flow Rate @ 0.2 MPa	Up to 450 l/min depending on the size
Connection under pressure	Allowed under residual pressure
Disconnection under pressure	Not allowed

Safety factor 4:1 according to ISO 14541.

## High Pressure



### PVVM

Screw-to-connect purposely designed for high pressure applications (hydraulic jacks for bridge maintenance). Equipped with a robust metal-to-metal sealing poppet valve.

Interchange	ISO 14540 type P
Available Size	1/4" & 3/8"
Valve Style	Poppet
Connection Type	Screw to Connect
Materials	High Grade Carbon Steel
Operating Pressure	Up to 103 MPa depending on the size
Flow Rate @ 0.2 MPa	Up to 20 l/min depending on the size
Connection under pressure	Allowed under residual pressure
Disconnection under pressure	Not allowed



### FFHP

Flat-Face quick-release couplings for very high pressure applications with safety sleeve to prevent accidental disconnection.

Interchange	Market
Available Size	1/4" & 3/8"
Valve Style	Flat Face
Connection Type	Push to Connect
Materials	High Grade Carbon Steel
Operating Pressure	Up to 72 MPa depending on the size
Flow Rate @ 0.2 MPa	Up to 46 l/min depending on the size
Connection under pressure	Not allowed
Disconnection under pressure	Not allowed

## Flat Face



### FFH

Flat face couplings with real maximum working pressure of 35 MPa and Zinc-Nickel plating, interchangeable according to ISO 16028 standards.

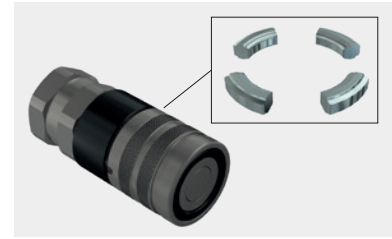
Interchange	ISO 16028
Available Size	1/8" to 1-1/4"
Valve Style	Flat Face
Connection Type	Push to Connect
Materials	High Grade Carbon Steel
Operating Pressure	35 MPa
Flow Rate @ 0.2 MPa	Up to 390 l/min depending on the size
Connection under pressure	Not allowed
Disconnection under pressure	Not allowed
Safety factor 4:1 according to ISO 16028	



### 3FFH

Flat-Face quick-release couplings connectable under residual pressure (up to 35 Mpa) and interchangeable according to ISO 16028 standards.

Interchange	ISO 16028
Available Size	3/8", 1/2", 3/4"
Valve Style	Flat Face
Connection Type	Push to Connect
Materials	High Grade Carbon Steel
Operating Pressure	35 MPa
Flow Rate @ 0.2 MPa	Up to 135 l/min depending on the size
Connection under pressure	Allowed under residual pressure
Disconnection under pressure	Not allowed
Safety factor 4:1 according to ISO 16028	



### FSH

Flat-Face quick-release couplings interchangeable according to ISO 16028 standards. Sectors latching patented system to tackle the brinelling effect.

Interchange	ISO 16028
Available Size	1/4", 1/2", 3/4", 1"
Valve Style	Flat Face
Connection Type	Push to Connect
Materials	High Grade Carbon Steel
Operating Pressure	35 MPa
Flow Rate @ 0.2 MPa	Up to 210 l/min depending on the size
Connection under pressure	Not allowed
Disconnection under pressure	Not allowed
Safety factor 4:1 according to ISO 16028	

## Heavy Duty



### FHV

Screw-on flat face couplings with Zinc-Nickel plating. Connectable by hand up to 35 MPa residual pressure in the male half. Equipped with internal bearing system and safety sleeve.

Interchange	Faster
Available Size	3/8" to 2"
Valve Style	Flat Face
Connection Type	Screw to Connect
Materials	High Grade Carbon Steel
Operating Pressure	Up to 53 MPa depending on the size
Flow Rate @ 0.2 MPa	Up to 750 l/min depending on the size
Connection under pressure	Allowed Male Half up to 35 MPa
Disconnection under pressure	Allowed



### FHV Accessories

Dust protections for male and female couplings.

Available Size	3/8" to 2"
Materials	PVC & Aluminium

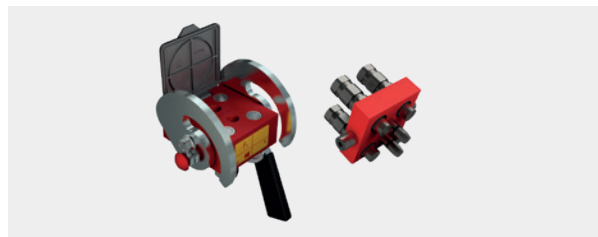
# MultiFaster



## 2P608

MultiFaster system equipped with 6 quick-release couplings size 1/2".

Interchange	Faster
Available Size	1/2"
Valve Style	Flat Face
Connection Type	Lever
Materials	High Grade Carbon Steel & Aluminium
Operating Pressure	25 MPa
Flow Rate @ 0.2 MPa	Up to 72 l/min depending on the size
Connection under pressure	Allowed with male half under pressure (3P series)
Disconnection under pressure	Not allowed



## PH408

MultiFaster system for very high pressure applications.

Interchange	Faster
Available Size	1/2"
Valve Style	Flat Face
Connection Type	Lever
Materials	High Grade Carbon Steel & Aluminium
Operating Pressure	46 MPa
Flow Rate @ 0.2 MPa	60 l/min
Connection under pressure	Allowed with male half under pressure (3P series)
Disconnection under pressure	Not allowed

# Castings Solutions



## 4BD4FH

Casting featuring flat-face FHH couplings 1/2" or 3/4" in the same housing. Higher flow capability guaranteed when using 3/4" cartridges.

Interchange	ISO 16028
Available Size	1/2" & 3/4"
Valve Style	Flat Face
Connection Type	Push to Connect
Materials	High Grade Carbon Steel & cast iron
Operating Pressure	35 MPa
Flow Rate @ 0.2 MPa	Up to 145 l/min depending on the size
Connection under pressure	Allowed Both Halves up to Working Pressure
Disconnection under pressure	Not allowed



## 5-Lines Block

Compact casting equipped with flat-face couplings; two input lines four output lines, or more.

Interchange	ISO 16028
Available Size	1/2" & 3/4"
Valve Style	Flat Face
Connection Type	Push to Connect
Materials	High Grade Carbon Steel & cast iron
Operating Pressure	35 MPa
Flow Rate @ 0.2 MPa	Up to 110 l/min depending on the size
Connection under pressure	Allowed up to max working pressure
Disconnection under pressure	Not allowed

---

Faster offers a dedicated range of products for Construction Equipment, suitable for both light equipment, such as skid steer and multiutilities, and heavy duty application. Every product is equipped with cutting-edge technological features, to answer the most demanding working conditions.

---

Construction Equipment is a challenging field of application for quick-release hydraulic couplings, where couplings must perform in tough environmental conditions, due to dust, mud, vibrations, temperature and pressure peaks.

Faster has developed several solutions for the CE market, including Flat Face couplings, to avoid any leakage, Screw-to-Connect couplings, robust and reliable, and Casting solutions, to ensure the connection of multiple lines with decompression feature.

We are the global reference  
in quick-release hydraulic couplings

**Faster Spa**

Via Ludovico Ariosto, 7  
I-26027 Rivolta d'Adda  
Cremona, Italy  
T +39 0363 377211  
F +39 0363 377333  
info@fastercouplings.com  
www.fastercouplings.com