

**Faster<sup>®</sup>**  
*easier to connect.*

**Agriculture**





---

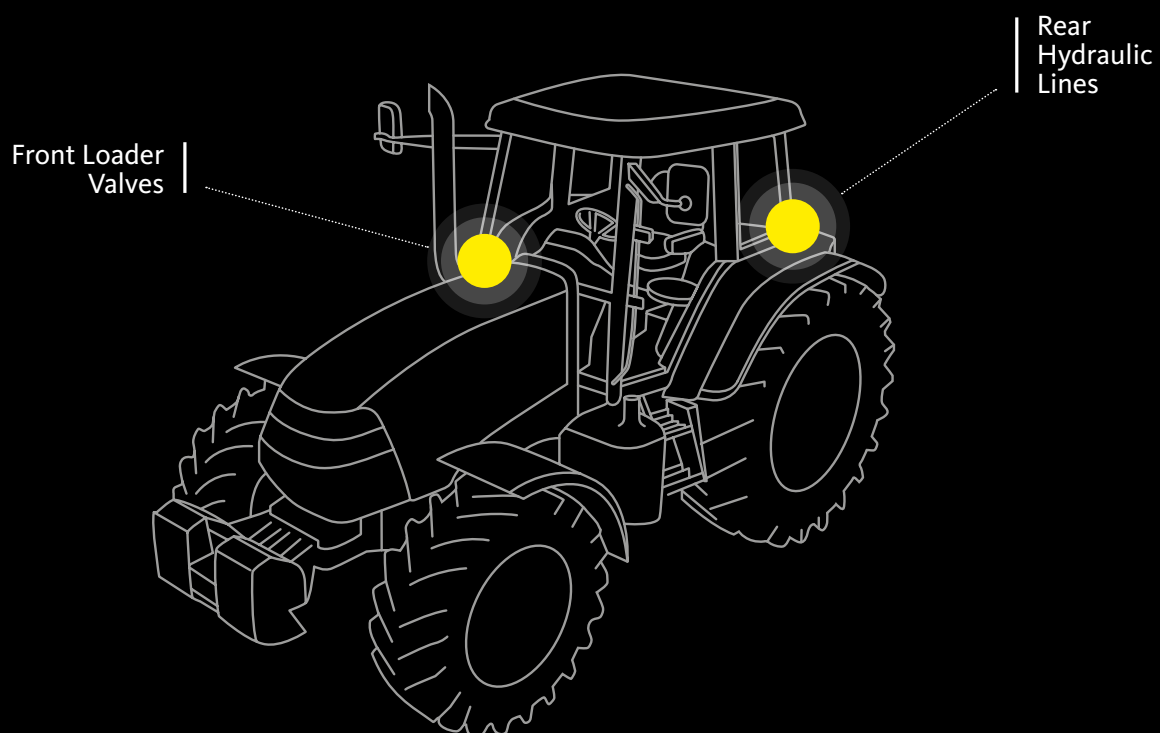
# Agriculture represents the historical and traditional field of application for Faster quick-release couplings

Agriculture is the leading field of application for quick-release hydraulic couplings. For this reason, Faster offers a wide range of products specifically designed for the agricultural sector. Faster has developed a full range of products, covering all the hydraulic connections on regular tractors, both on rear hydraulic lines and front loaders.

Our product portfolio entails various types of couplings and Multifaster, alongside tailor-made solutions, such as castings and blocks, to meet the requirements from different manufacturers. Moreover, we have selected products specifically designed for harvesting applications.

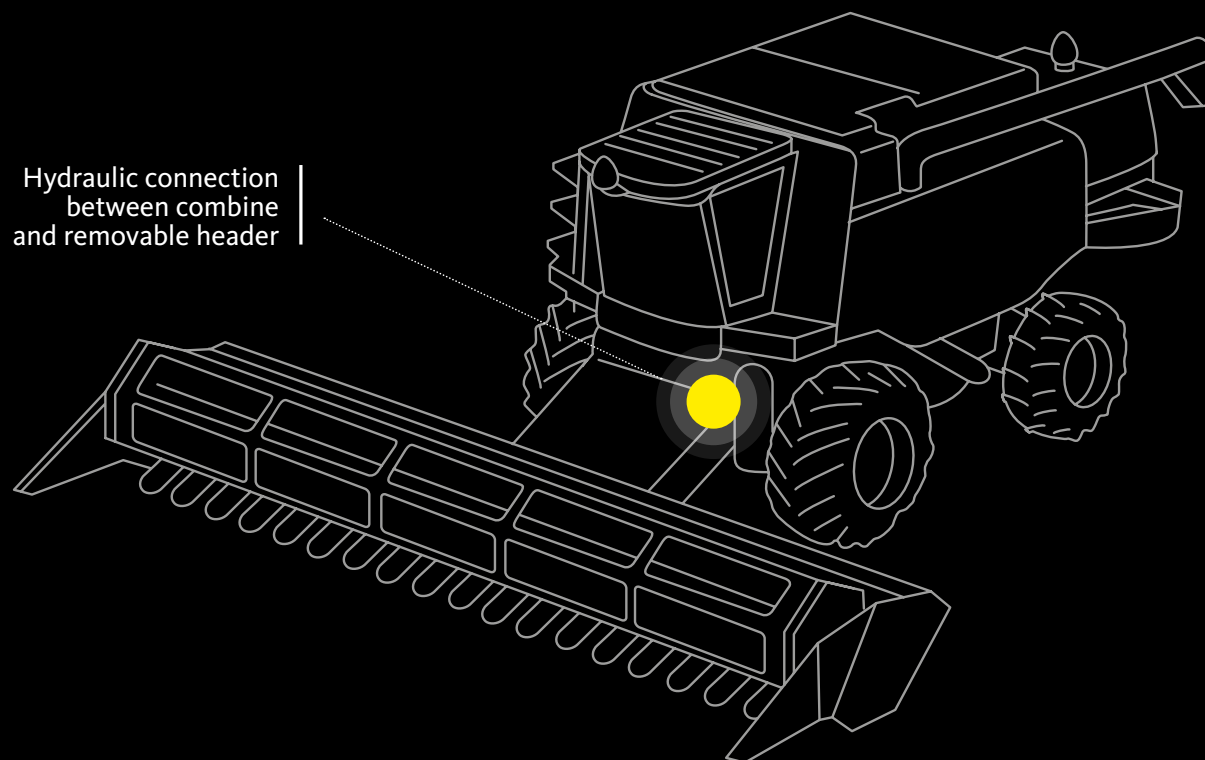
---

# Tractor



---

# Combine





## ICONS LEGEND



Connection Under Pressure:  
Allowed Male Half up to W.P.



Connection Under Pressure:  
Allowed Both Halves



Connection Under Pressure:  
Allowed Residual



Connection and disconnection  
Under Residual Pressure both halves



Connection Under Pressure:  
Allowed Male Half up to W.P.



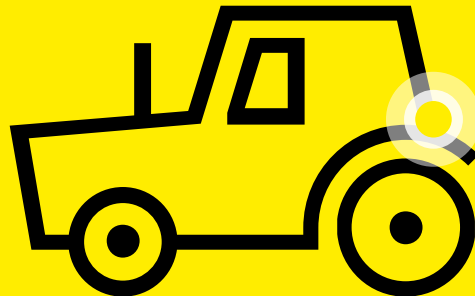
Connection Under Pressure:  
Not Allowed

---

# Rear Hydraulic Lines

---

Lines to connect the hydraulic circuit to rear attachments, in order to power them. Some attachments may also require the «power beyond» configuration. Oil flows from the female couplings on the tractor to the male on the attachment, and returns.





---

# Single Couplings

- 
- **SLEEVE RETRACTION**
  - **PUSH - PULL**
  - **HIGH FLOW**

Faster offers a wide variety of couplings specifically designed for agriculture.

All single couplings solutions for agriculture are size 1/2" and interchangeable according to ISO 7241 part A.

Standard features for the Agriculture range are: carbon steel as material, CrIII as surface treatment, poppet valve and a maximum operating pressure of 25 MPa.

# Sleeve Retraction

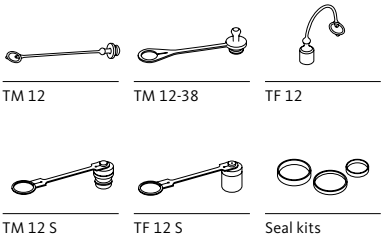


**NV** |  |

Male and Female couplings with poppet valve shut-off system.  
Flow rate @ 0.2 MPa: 75 l/min.



### Accessories and spares

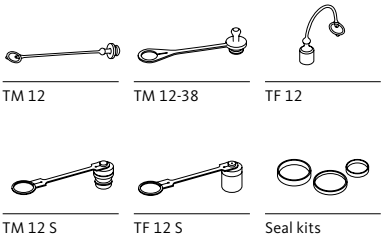


**4AGRI** |  |

Male and Female couplings with microvalve to easily relief the residual pressure.  
Flow rate @ 0.2 MPa: 75 l/min.  
Zinc-Nickel surface treatment.



### Accessories and spares

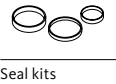
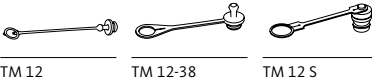


# CPV



Female couplings designed for panel mounting installation and connection to flexible hoses.  
Wide range of threaded adapters available.  
Flow rate @ 0.2 MPa: 75 l/min.

## Accessories and spares

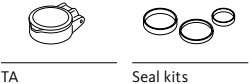
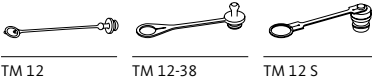


# 3CPV



Female couplings designed for panel mounting installation and connection to flexible hoses.  
Connectable with male under residual pressure.  
Flow rate @ 0.2 MPa: 75 l/min.  
Breakaway function.

## Accessories and spares



# Push-Pull

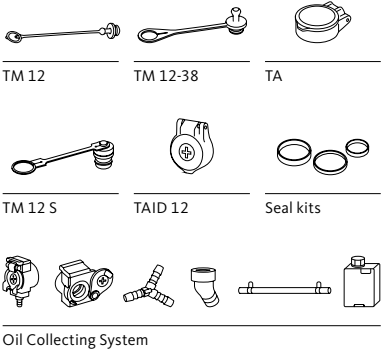


## 3CFPV



Push-Pull female couplings connectable with male under residual pressure.  
Can be screwed directly into valve ports or rigid pipes.  
Flow rate @ 0.2 MPa: 70 l/min.  
Breakaway function.

### Accessories and spares

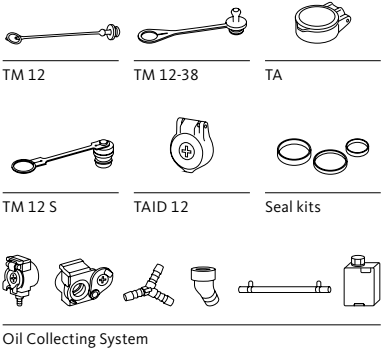


## 4SRPV



Push-Pull female couplings, connectable under residual pressure in both male and female side.  
Can be screwed directly into valve ports or rigid pipes.  
Flow rate @ 0.2 MPa: 70 l/min.  
Breakaway function.

### Accessories and spares



# 6DNPV



Push-Pull female couplings for rigid mounting connectable with male and female under pressure, disconnectable under pressure with low effort. Equipped with one or two oil collecting ports to collect clean oil and reduce spillage. Flow rate @ 0.2 MPa: 50 l/min.

## Accessories and spares

TARV 34	Seal kits			
Oil Collecting System				

# HF High Flow

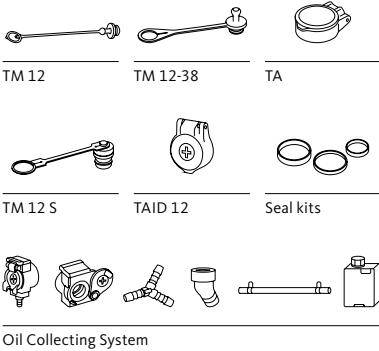


## 3CFHF



Male and female Push-Pull couplings for agriculture connectable with male under residual pressure.  
Maximum flow rate: 250 l/min.  
Breakaway function.

### Accessories and spares

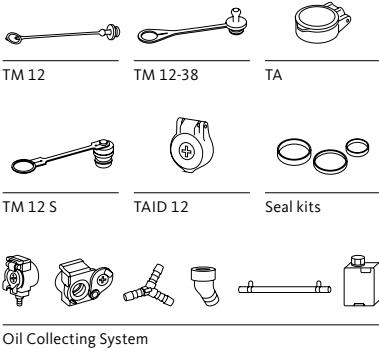


## 4SRHF



Male and female Push-Pull couplings for agriculture connectable under residual pressure in both male and female side.  
Maximum flow rate: 250 l/min.  
Breakaway function.

### Accessories and spares



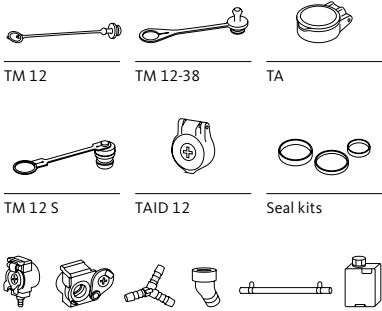


# 3CKHF



Male and female compact Push-Pull couplings for agriculture connectable with male under residual pressure.  
Maximum flow rate: 250 l/min.  
Reduced dimensions: 15 mm shorter.  
Breakaway function.

## Accessories and spares



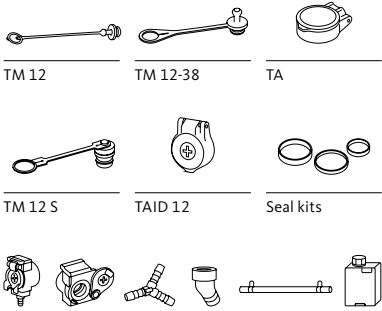
Oil Collecting System

# 4SKHF



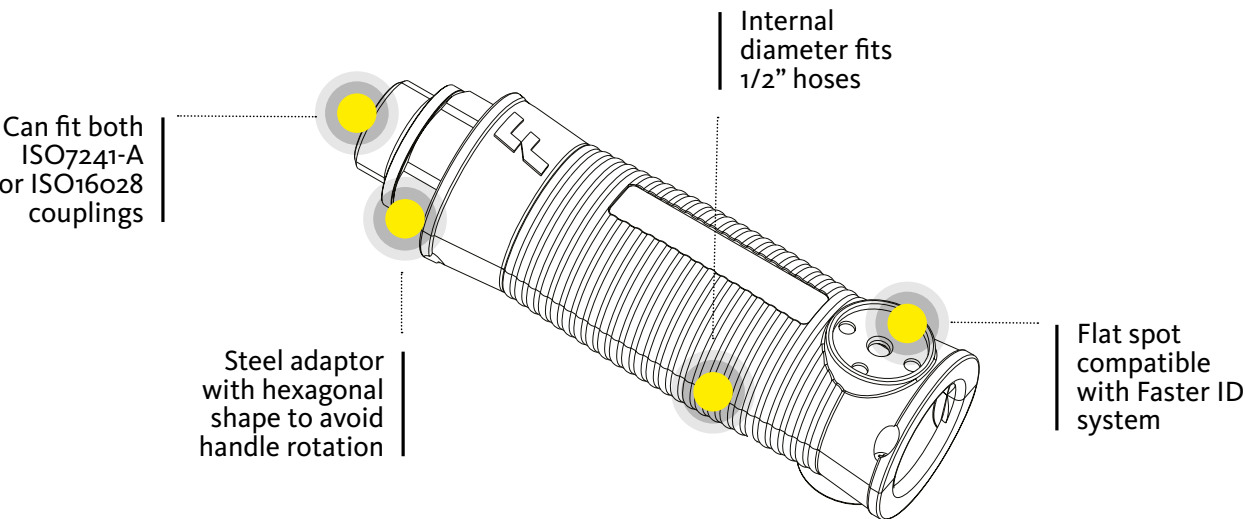
Male and female compact Push-Pull couplings for agriculture connectable under residual pressure in both male and female side.  
Maximum flow rate: 250 l/min.  
Reduced dimensions: 15 mm shorter.  
Breakaway function.

## Accessories and spares



Oil Collecting System

# FastGrip



## MAIN ADVANTAGES

### Visual

With Faster ID clips is possible to add information about the lines

### Fits existing Oil Collecting System

The handle allows correct opening of oil caps when connected

### Pressure Tested

Using a steel CrIII plated adaptor, Faster system offers same resistance to burst and pulse pressure as other line components

### Perfect mix

Right weight, right compactness and right cost

## DETAILS

Handle	Adaptor	Color	Working Pressure	Burst Pressure
PP plastic UD additive DIN adaptors	Steel + CrIII plating 500 hours Salt Spray test	Black handle + Tags in various colors	350 bar	1200 bar

## AVAILABLE TAGS

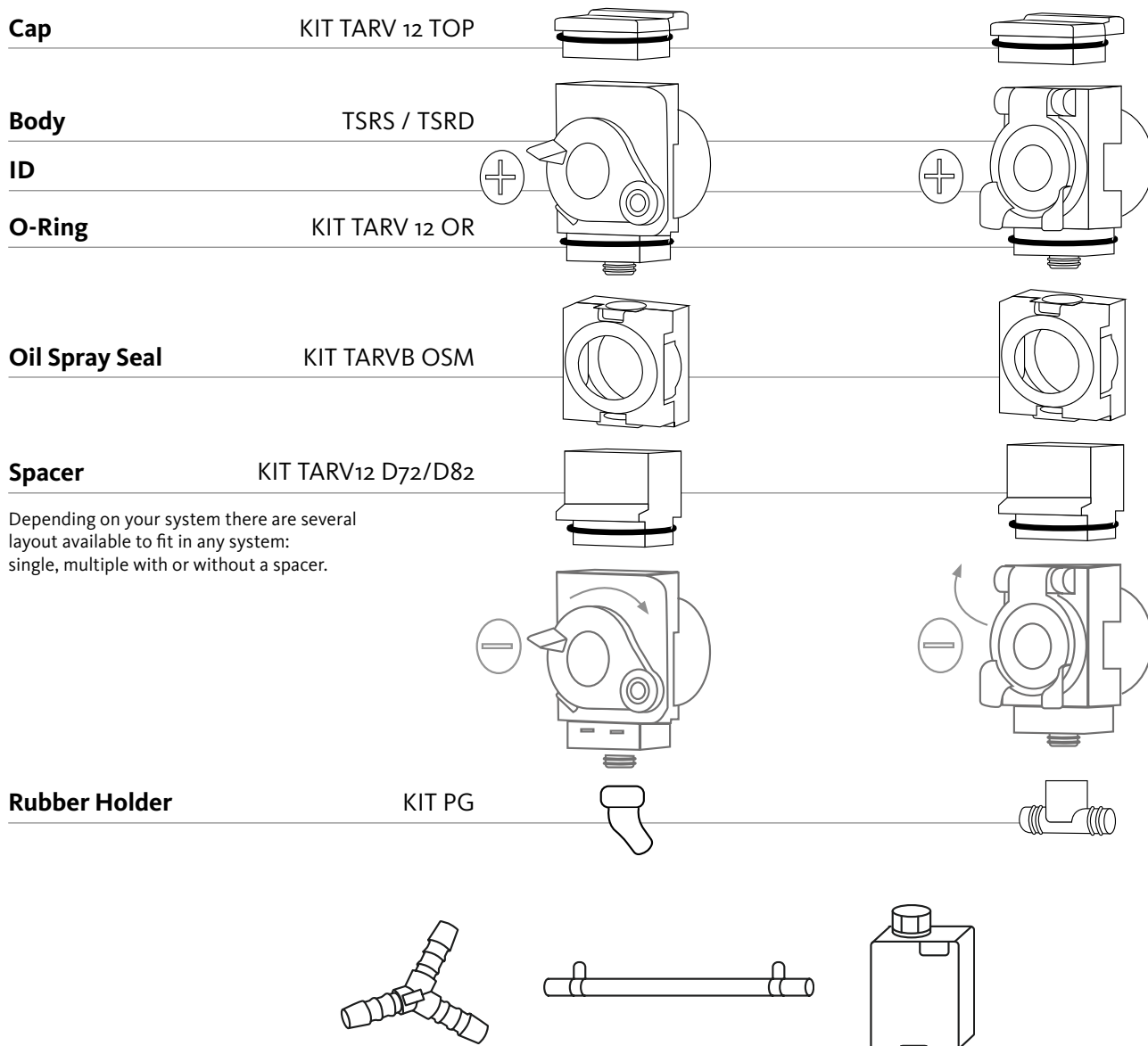
Symbol	Colour										
											
	Orange	White	Blue	Light Blue	Yellow	Grey	Brown	Black	Purple	Red	Green
+	ID A +	ID BI +	ID B +	ID C +	ID G +	ID GR +	ID M +	ID N +	ID P R4008 +	ID R +	ID V +
-	ID A -	ID BI -	ID B -	ID C -	ID G -	ID GR -	ID M -	ID N -	ID P R4008 -	ID R -	ID V -
1			ID B 1								ID V 1
2			ID B 2								ID V 2
3			ID B 3								ID V 3
4			ID B 4								ID V 4
5			ID B 5								ID V 5



# Oil Collecting System

Kit TARV can be used as an oil collecting for either a new or an old system.

Specifically designed by Faster, it can be mounted on Faster 3CFPV and 4SRPV couplings (both normal and compact, 3CKPV and 4SKPV series) with a vertical configuration.



Kit TARV has several accessories to fit in any system such as plastic joints to connect dust protections and hoses, in different shapes according to configurations, or a plastic bottle to collect the dirty oil.



# Castings

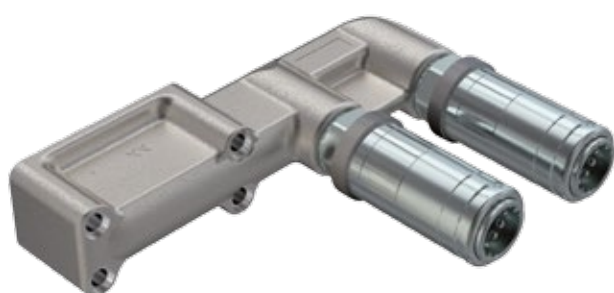
---

Castings are the ideal solution for tractors with a technologically advanced configuration, designed to ensure better performances and avoid any leakage. They are designed to be directly screwed on control valves and tailored to the manufacturer's space needs. The castings configuration allows for mounting several Push-Pull couplings series, both in their standard or High Flow version. The improved technology lies in the coupling you choose.



# Castings

## Manifold Block



Cast iron block with 1/2" couplings screwed on.  
Flow rate @ 0,2 MPa: up to 50 l/min.  
Connection under pressure allowed depending on the mounted coupling.  
Possible configuration: 3CFPV, 4SRPV, 6DNPV and High Flow couplings.

### Accessories and spares



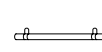
TARV 34



TSRD



Couplings



Oil Collecting System

## Semi-integrated Universal Cartridge



Cast iron block with semi-integrated cartridges. It can fit poppet or flat face cartridges in 2 sizes: 1/2" or 3/4".  
Axial oil flow passage ensures higher flow rates and lower pressure drop.  
Flow rate @ 0,2 MPa: 70 l/min for size 1/2". Connection under pressure always allowed thanks to the lever.  
Disconnection under pressure depending on the mounted cartridges.

### Accessories and spares



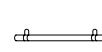
TARV 34



TSRD



Cartridge



Oil Collecting System

## Fully-integrated Cartridge



Cast iron block with integrated 1/2" cartridge.

Flow rate @ 0,2 MPa: up to 55 l/min.  
Connection and disconnection under pressure allowed. Castings available with different configurations: series 4 (connection assisted by lever), series 5 (connection assisted by lever, no male depressurisation while disconnecting) and series 6 (no need of lever).

### Accessories and spares



Cartridge



Mask Series 5



4BM TA D

## Fully-integrated Universal Cartridge



Cast iron block with fully integrated cartridges, connection assisted by lever.

Possible to fit either poppet or flat face cartridges in 3 different sizes: 1/2", 5/8" or 3/4".

Flow rate @ 0,2 MPa: 50 l/min for size 1/2".

Connection and disconnection under pressure allowed.

### Accessories and spares



Cartridge



Dust cap



# Power Beyond

---

Full set of flat face couplings for Power Beyond rear attachments, sizes in accordance with class 1 to 3 of ISO 17567 standard.

Power Beyond attachments allow the tractor to receive pressure feedback from the field through load signal line, in order to adjust oil flow and optimize performances.

# Power Beyond



## 5FPI | |



Flat face couplings specifically designed for Power Beyond applications.

Interchangeable according to ISO 16028.

Connection and disconnection under residual pressure allowed.

Equipped with collecting port for clean oil.

Available in sizes 1/2" and 3/4".

Flow rate up to 150 l/min, depending on the size.

---

### Accessories and spares



TM FPI

## FPI | |



Flat face couplings specifically designed for Power Beyond applications.

Interchangeable according to ISO 16028. Breakaway function.

Connection under pressure allowed.

Available in sizes 1/4", 3/8", 1/2", 3/4" and 1".

Flow rate up to 210 l/min, depending on the size.

---

### Accessories and spares



TM FPI



Faster offer for Powerbeyond covers all ports composing the Power Beyond configuration:

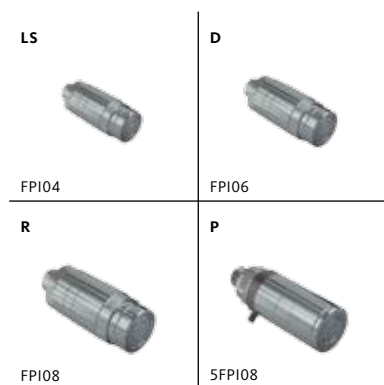
<b>Load Signal Port</b>	<b>Drain Port</b>
<b>Return Port</b>	<b>Pressure Port</b>

In order to meet the flow requirements of different attachments, Faster has adapted its offer to the 3 flow classes specified by ISO 17567

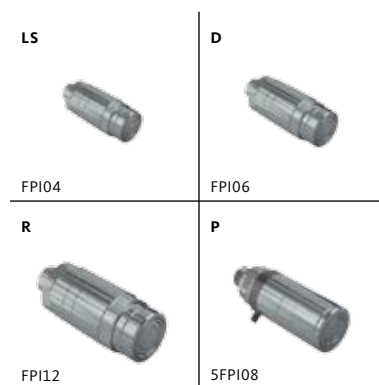
**Class 1** – Up to 45 l/min  
**Class 2** – 45 to 100 l/min  
**Class 3** – Above 100 l/min

## Faster couplings range for Power Beyond applications

### Flow Class 1 Up to 45 l/min



### Flow Class 2 45 to 100 l/min



### Flow Class 3 Above 100 l/min



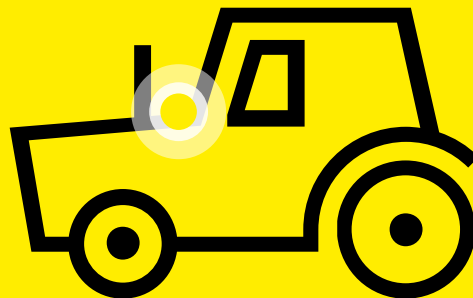
---

# Front Loaders

---

Lines to connect the hydraulic circuit to front loader attachments to power them. The number of lines varies depending on the number of functions required. Very often there are also electrical connections.

Multifaster are the best solution for this type of application, granting comfort and compactness.



---

# Multifaster for Front Loaders

---

Multifaster are the market reference to connect multiple lines, allowing an effortless connection even with residual pressure in the system. Each product entails a different combination of elements, such as number of lines, coupling size, lever and electrical connectors. The number of lines varies according to the functions performed by the attachment. Tractor front loaders are a typical application for Multifaster.

# MultiFaster



## P608



Multifaster 6 lines, size o8.  
Flow rate @ 0.2 MPa: 70 l/min.  
Possible to mount 2 electrical connectors.

---

### Accessories and spares



KIT3FN



KIT2FN



Seal kits

## P506-X



Multifaster 5 lines. 4 lines o6 and  
1 line o8. Line o8 can be replaced by  
an electrical connector.

---

### Accessories and spares



KIT3FN



KIT2FN



Seal kits

## PC206



MultiFaster compact. It allows connection with mobile plate or stand-alone counterpart couplings, 2 lines size o6.

The disconnection of stand-alone counterpart couplings is made by dedicated push buttons.

This feature can be extended to all MultiFaster range.

### Accessories and spares



KIT3FN



Seal kits

## PSA06



Multifaster 4 lines, size o6.

Can be connected and disconnected both as a standard multifaster or with single lines. Single lines identified by switches of different colours.

Interchangeable with PSo6.

Equipped with dust cover with rolls to ensure perfect sealing when not connected.

### Accessories and spares



KIT3FN



KIT2FN



Seal kits

---

# Harvester/ Combine

---

Combine/harvester machines combine in one single process three harvesting operations: reaping, threshing and winnowing. Combines are equipped with removable heads, each of them designed for a specific crop. Removable heads can be hydraulically connected and disconnected by simply using Multifaster.



---

# Multifaster for Harvesting Applications

---

Faster offers a range of Multifaster specifically designed for harvesting applications.

Multifaster ensure a safe and quick connection and disconnection between the header and the harvester. This allows to easily dismantle and transport the harvester from one field to another. The Multifaster allows a very quick and safe connection and disconnection of the header, which can be replaced according to the operation that needs to be performed by the operator.

# MultiFaster



## PLV



Multifaster 5 lines. 3 lines size o6,  
2 lines size o9 , 1 housing for electrical  
connector.  
Working pressure 22 Mpa.  
Flow rate @ 0.2 MPa: 3 lines 20 l/min,  
2 lines 35 l/min.

### Accessories and spares



KIT3FN



KIT2FN



Seal kits

## PLK



Multifaster 5 lines. 2 lines size o6,  
3 lines size o9 , 1 housing for electrical  
connector.  
Working pressure 25 Mpa.  
Flow rate @ 0.2 MPa: 2 lines 20 l/min,  
3 lines 35 l/min.

### Accessories and spares



KIT3FN



KIT2FN



Seal kits



## P5065



Multifaster 5 lines. 3 lines  $\phi 4$ ,  
2 lines  $\phi 6$ .  
Working pressure 25 Mpa.  
Flow rate @ 0.2 MPa: 3 lines 20 l/min,  
2 lines 40 l/min.

### Accessories and spares



KIT3FN

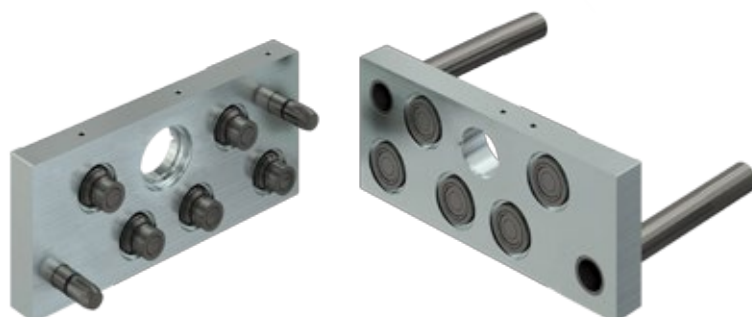


KIT2FN



Seal kits

## Automatic Connection



MultiFaster suitable for Harvesting,  
with automatic alignment system.  
Fixed plate designed to self-align with  
mobile plate to complete connection.  
This kind of product allows the operator  
to complete the connection with safety,  
comfort and time saving.  
This MultiFaster can be customized  
with addition of electrical connectors.



We are the global reference  
in quick-release hydraulic couplings

**Faster Srl**

Via Ludovico Ariosto, 7  
I-26027 Rivolta d'Adda  
Cremona, Italy  
T +39 0363 377211  
F +39 0363 377333  
[info@fastercouplings.com](mailto:info@fastercouplings.com)  
[www.fastercouplings.com](http://www.fastercouplings.com)