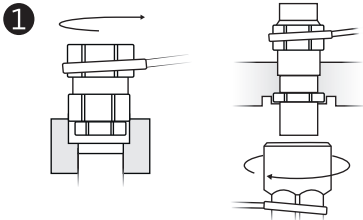
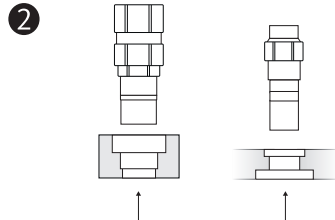


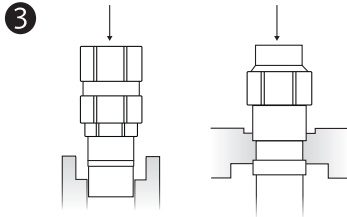
Male Coupling Replacement



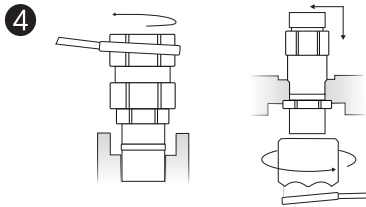
Unscrew the male coupling to be replaced.



Insert the new male coupling.



Remove the male coupling from the plate.



Screw-on the coupling with the following maximum torque:

Size	Torque
1/4"	50 Nm
3/8"	50 Nm
1/2"	70 Nm
3/4"	90 Nm
1"	100 Nm
1 1/2"	103 Nm